

PSS 4.05-6 Software Setup for PC

[DOWNLOAD THE LATEST VERSION OF PSS HERE](#)

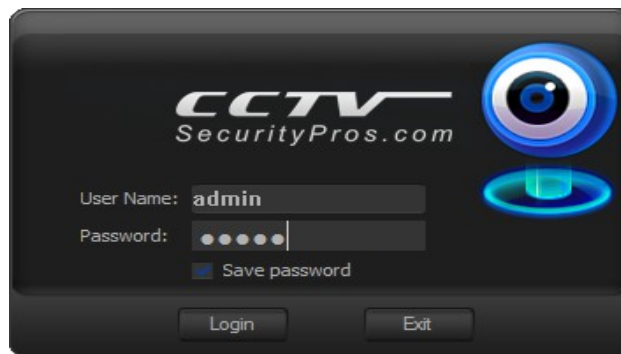
PSS is software you can use on your PC to watch the live view from your Camera or DVR, watch recorded videos from your DVR and cameras, and change any and all of the settings on your DVR.

To setup PSS for remote viewing on your PC there are just a few steps to access your DVR.

First off, if you have not done so already you should check out our videos and pdf's for remote view setup here:

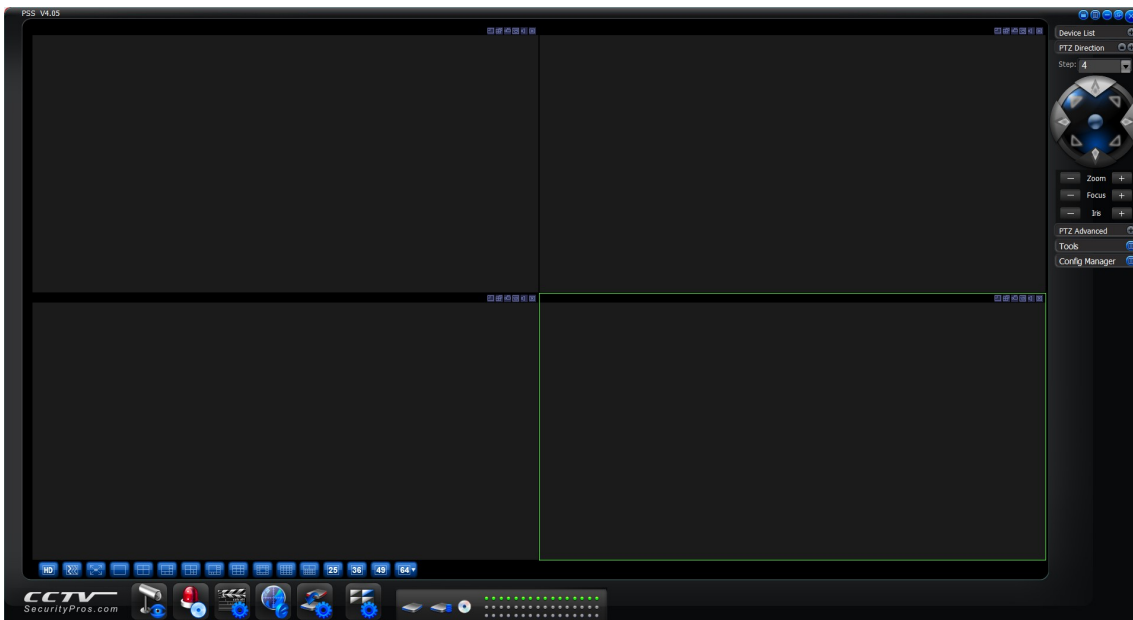
<http://www.cctvsecuritypros.com/remote-viewing-setup-guide.html>

Step 1 - Once those steps are done, just use the link above to download our PC version. Install the software and then you should get a login window that looks like this:



This is the software username and password, not to be confused with your DVR's username and password.

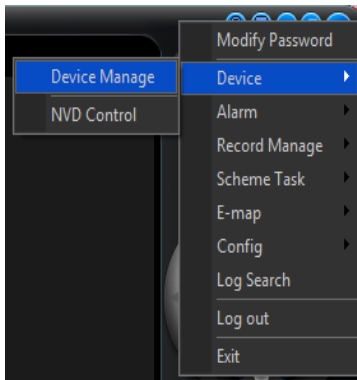
Step 2 - Click the Login button and you will get to PSS's main screen:



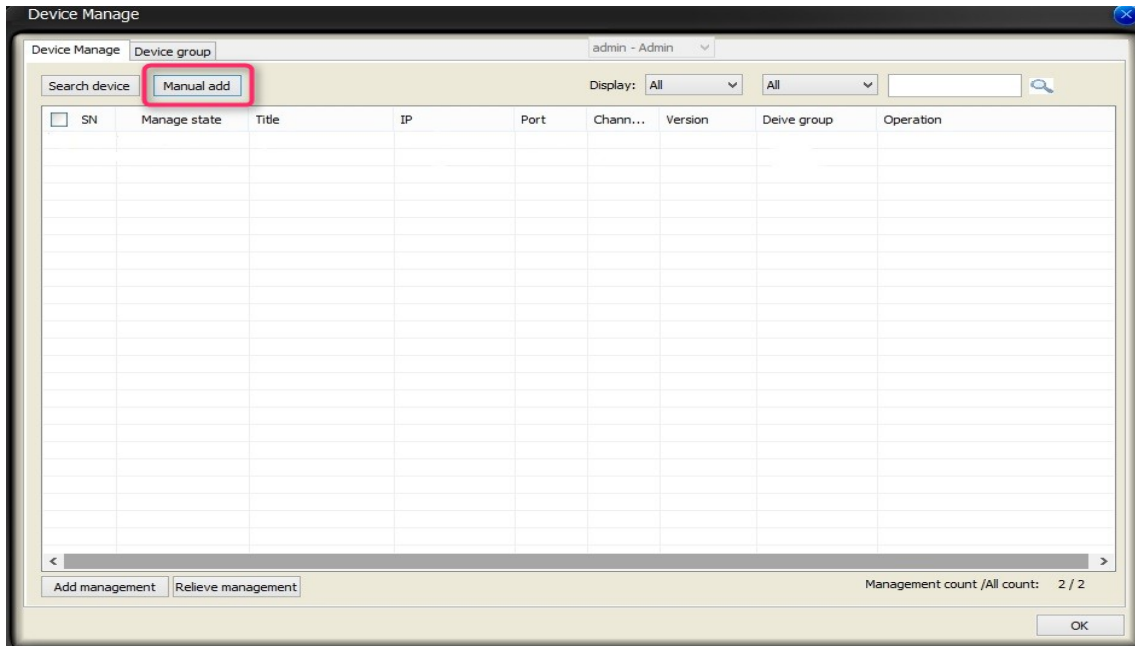
Step 3 - Click on the "Full Menu" button in the top right:



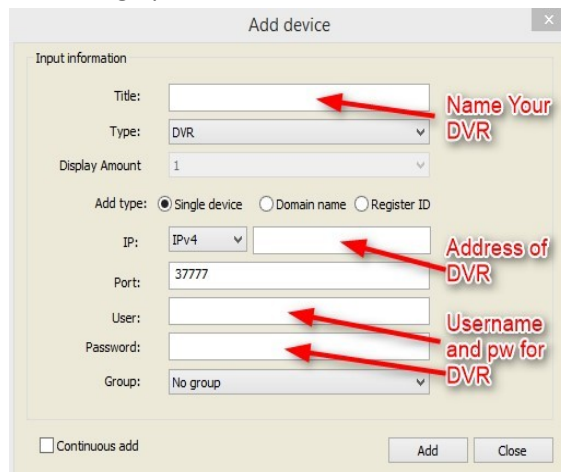
It will expand to this:



Move the mouse to Device and then click on Device Manage. This will bring up this screen:



Step 4 - Click on "Manual Add" to bring up this screen:



✕

Add device

Input information

Title:

Type:

Display Amount:

Add type: Single device Domain name Register ID

IP:

Port:

User:

Password:

Group:

Continuous add

A typical local DVR add

✕

Add device

Input information

Title:

Type:

Display Amount:

Add type: Single device Domain name Register ID

IP:

Port:

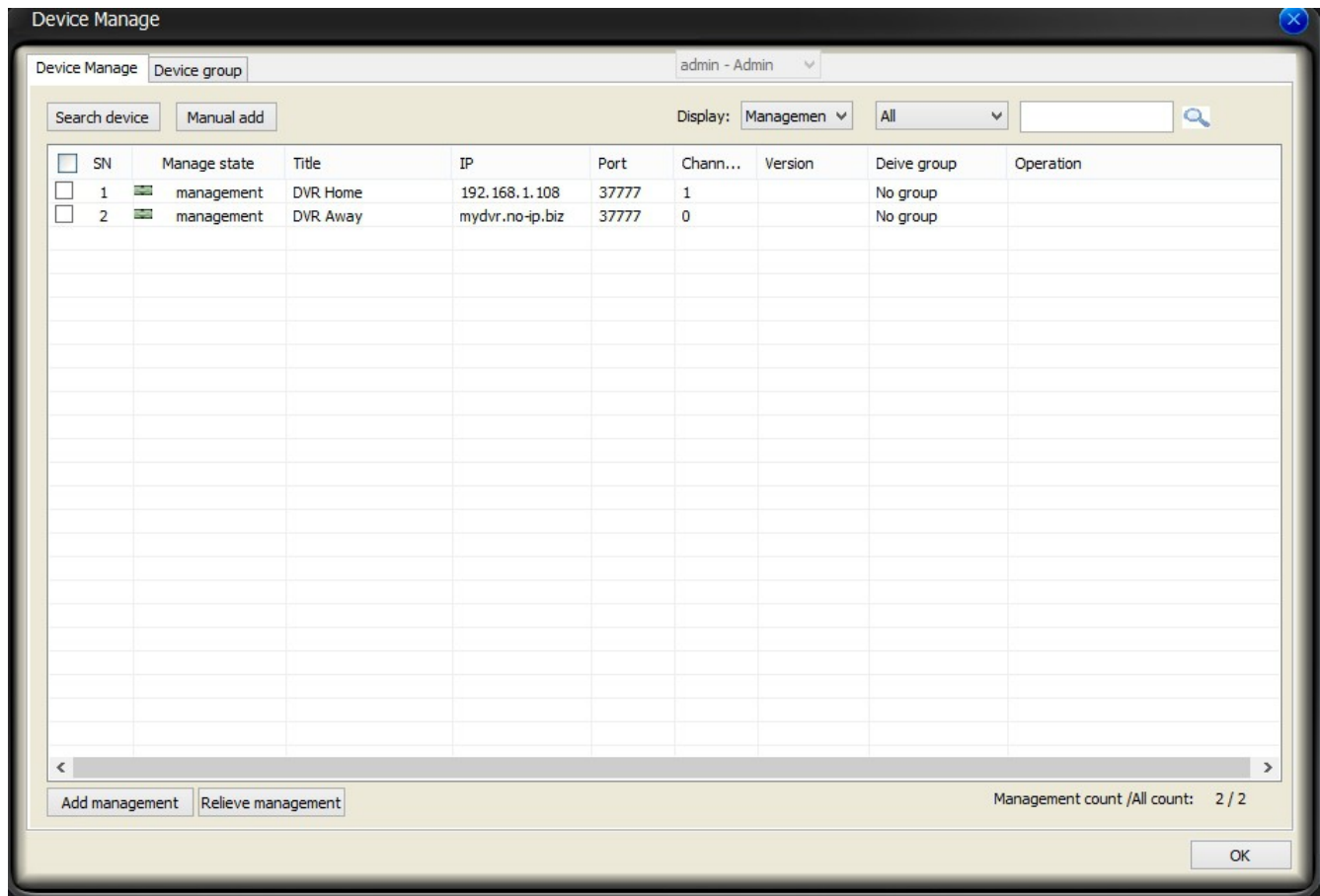
User:

Password:

Group:

Continuous add

A typical remote add



Definitions:

TITLE: In the title box you can enter a name for your DVR. Be sure to distinguish between a DVR you will access from the same network and a DVR you will access from another network.

TYPE: Set this to DVR for DVR's and NVR's. Set it to IP CAMERA if you are connecting to an IP Camera.

IP: Leave the first section on Ipv4. Enter the address of your DVR in the second section.
 Examples of DVR addresses would be: 192.168.1.108 or mydvr.no-ip.biz.
 Be sure to not include things like "http:///" or :88 at the end.

PORT: This should be 37777 unless you have multiple DVR's or you changed the DVR's TCP port.

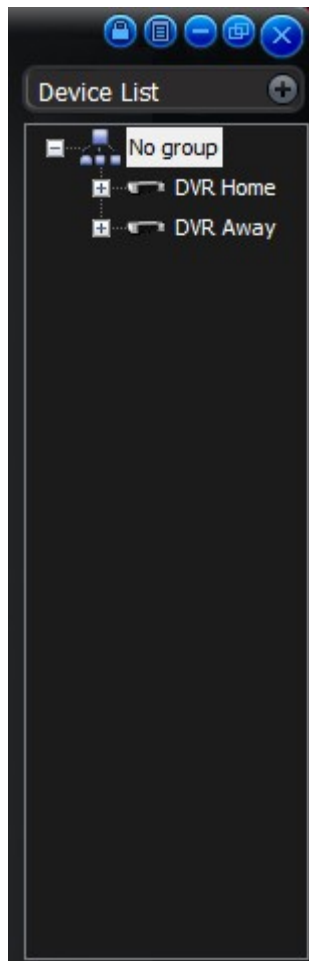
User: This is the user name for the DVR or camera. Typically it is admin.

Password: This is the password for your DVR or camera. By default it is also admin.

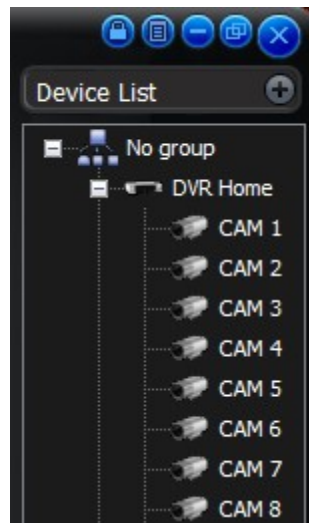
When all the info is entered click "Add."

Click OK on the bottom Right of the screen.

This will add it to your Device List in the top right corner of PSS. Double click on No Group to expand it to make it look like this:



Double Click on either one that is connected to expand and get a list of your cameras like this:

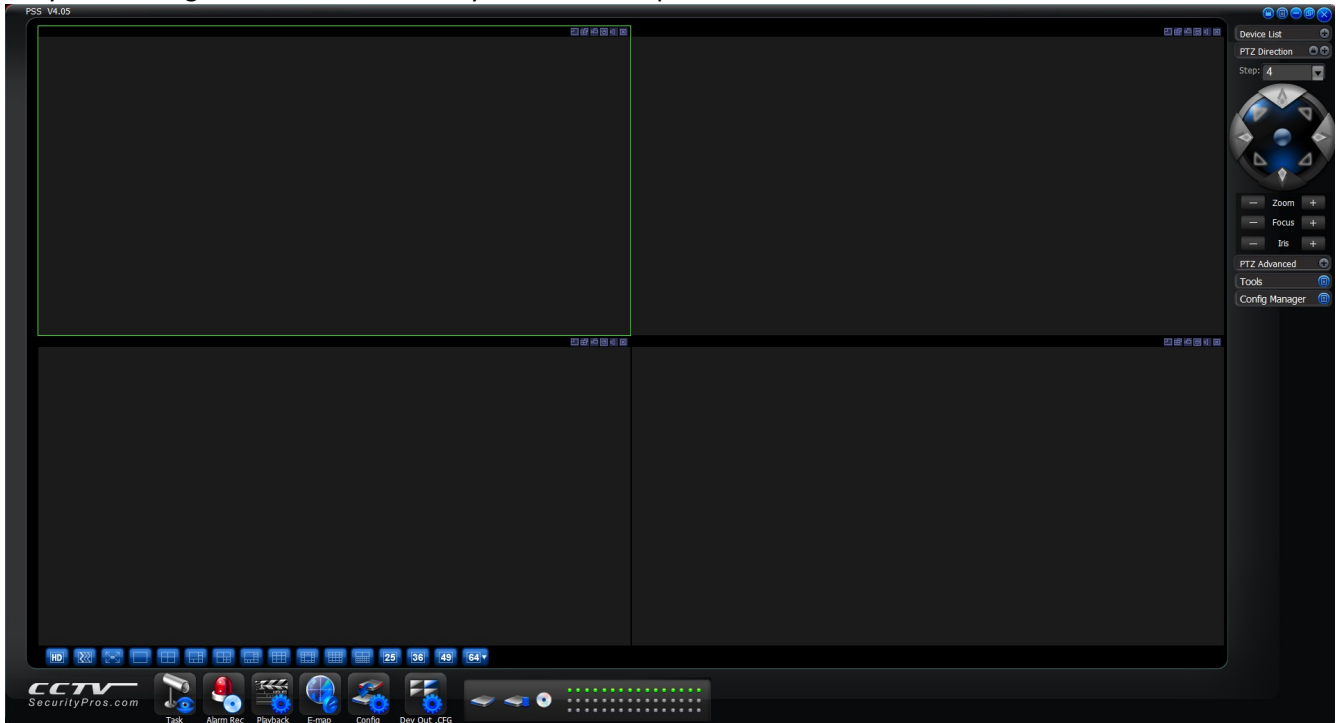


Now you are connected to your DVR.

To open a camera:

Click on a window to select it. It will highlight green like the picture below. Then double-click on a camera name on the right hand side of your screen. The camera will open in that window.

OR you can drag a camera into the box you want it to open in.



Thank you!

If you have any questions or need technical support please email us here:

support@cctvsecuritypros.com

