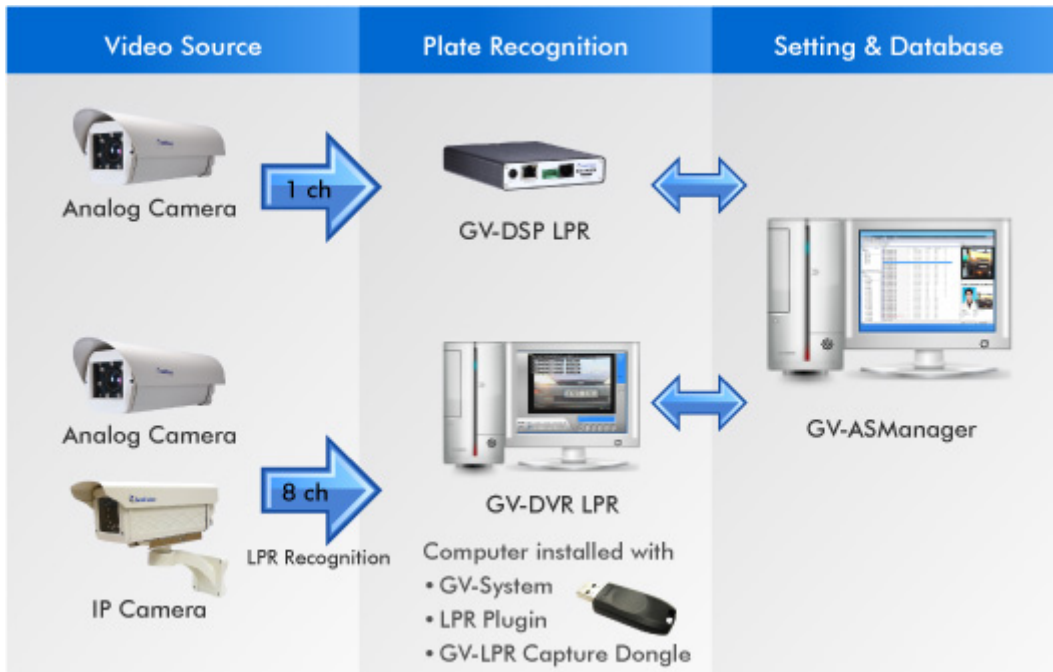


Introduction

GeoVision's License Plate Recognition is an effective and low-maintenance solution to ensure the security of parking lots, which are prone to crimes due to isolated and unstaffed corners. In addition to providing high-resolution video monitoring and recording, the LPR solution detects and recognizes vehicle license plates upon motion or I/O trigger.

A GV-DSP LPR or a GV-DVR LPR recognizes license plates detected in the video source, and sends the LPR results to GV-ASManager. Access can be granted when the detected license plate numbers match the vehicle registered in GV-ASManager's database. Alarm notifications and playing back LPR results are also supported.



AVAILABLE VERSION

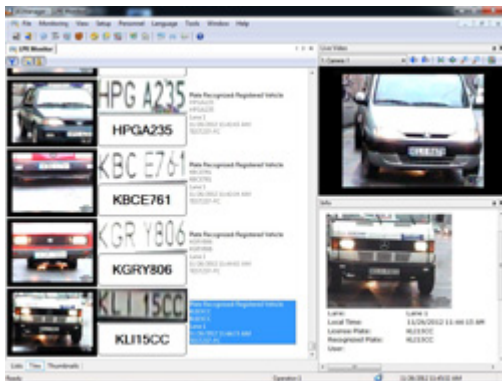
Argentina	Australia	Austria	Belgium
Brazil	Canada	China	Chile
Columbia	Croatia	Cyprus	Czech Republic
France	Germany	Guernsey	Hungary
India	Ireland	Israel	Italy
Malaysia	Mexico	Norway	Poland
Portugal	Russia	Serbia	Slovakia
Slovenia	South Africa	Spain	Taiwan
Thailand	Turkey	UK	USA
Vietnam			

There is a Global version which is suitable for most of the other countries. More are to be implemented.

FEATURES

GV-ASManager Access Control System

- Control up to 255 GV-DVR LPR and / or GV-DSP LPR
- Up to 40,000 vehicles
- Multiple vehicles per user
- Import / export of vehicle data in Access or Excel file format
- GV-ASWeb: Remotely enroll vehicles and set up GV-DVR LPR or GV-DSP LPR on GV-ASManager
- GV-ASWeb: Remotely search detected vehicles, see license plate snapshots, watch recordings from connected GV-DVR LPR or GV-DSP LPR
- 6 languages supported: English, French, Portuguese, Russian, Spanish, Traditional Chinese



System Requirements

GV-ASManager V4.1

The following are minimum system requirements to run GV-ASManager V4.1.

OS	32-bit	Windows XP / Vista / 7 / 8/ Server 2008
	64-bit	Windows Vista / 7 / 8 / Server 2008 / Server 2012
CPU	Core 2 Duo E8400, 3.0 GHz	
Memory	2 x 1 GB Dual Channels	
Hard Disk	500 GB	
VGA	AGP or PCI-Express, 1280 x 1024 , 32-bit color and support DirectX 10	
DirectX	End-User Runtimes (November 2008)	
Software	.NET Framework 3.5 SQL Server 2005 Express (optional)	
Browser	Internet Explorer 7.0 or later	

GV-DVR LPR

Number of LPR Channels	1-4 Channels	5-8 Channels
OS	64-bit Windows 7 / 8 / Server 2008 / Server 2012	
CPU	Core i5 2400, 3.1 GHz	Core i7 2600, 3.4 GHz
Memory	2 x 2 GB Dual Channels	
Hard Disk	500 GB	
VGA	AGP or PCI-Express, 1280 x 1024 , 32-bit color and support DirectX 10	
DirectX	End-User Runtimes (November 2008)	
Software	.NET Framework 3.5 SQL Server 2005 Express (optional)	
Browser	Internet Explorer 7.0 or later	
GV-System	GV-ASManager 4.0: V8.5.5.0 or V8.5.6.0 GV-ASManager 4.1: V8.5.7.0	
Hardware	External or internal GV-LPR Capture Dongle	

Note: It is recommended to use separate PCs for GV-ASManager and GV-DVR LPR.

Software License

Free License	N/A
Maximum License	8 channels
Increment for Each License	1 channels
Dongle Type	Internal or external

Note: The Maximum License is a paid service.

GV-DSP LPR

GV-ASManager V4.1 is only compatible with GV-DSP LPR firmware V2.0 and V2.0.1

Options

For GV-DVR LPR

GV-IO Box	The GV-IO Box provides 4, 8 or 16 inputs and relay outputs. It supports both DC and AC output voltages, and provides a USB port for PC connection.
GV-Hybrid LPR Cam 10R	The GV-Hybrid LPR Camera 10R is a 1.3 MP B/W network camera designed solely for recognition of reflective license plates on vehicles traveling at 120 km/hr (74.6 mph) or less.
GV-IP LPR Camera 5R	Ideal for parking lot installation, the GV-IP LPR Camera 5R is a 1.3 MP B/W network camera designed for recognition of reflective license plates on vehicles traveling at 60 km/hr (37 mph) or less.

For GV-DVR LPR and GV-DSP LPR

GV-LPR Cam 10A ANPR Camera	The GV-LPR CAM 10A provides 570 TVL high-contrast license plate recognition video to GV-DVR LPR or GV-DSP LPR that identifies license plates. The camera features 7 high-efficient LEDs for an illumination range of 7 ~ 12 m / 22.96 ~ 39.37 ft.
GV-LPR Cam 20A ANPR Camera	The GV-LPR CAM 20A provides 570 TVL high-contrast license plate recognition video to GV-DVR LPR or GV-DSP LPR that identifies license plates. The camera features 24 high-efficient LEDs for an illumination range of 15 ~ 25 m / 49.21 ~ 82.02 ft.