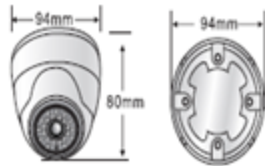


CSP-650VDIR

Indoor/Outdoor Sony Super HAD CCD Infrared Day/Night Dome Security Camera with 24 Infrared LEDs, 650 TV Lines, Built-in 3.6mm Lens



Schematic Diagram



Specification

Image Sensor	1/3" SONY SUPER HAD II CCD
Effective pixels	PAL:752(H)X582(V) NTSC:798(H)X494(V)
Sensor area	4.9mmX3.7mm
Signal system	PAL/NTSC
Horizontal resolution	650TVL
Minimum illumination	0Lux(IR LED ON)
Electronic shutter	Auto:1/50(1/60)-1/100,000Sec
S/N ratio	>48dB
Gamma	0.45
Lens	3.6mm
Video output	1.0Vp-p,75Ω
IR wave length	24Pcs Ø5mm IR LEDS (wavelength 850nm)
Power supply	DC 12V±10%
Power consumption	less than 3.6W
IR distance	10-20M

Warning & Attention

CAUTION

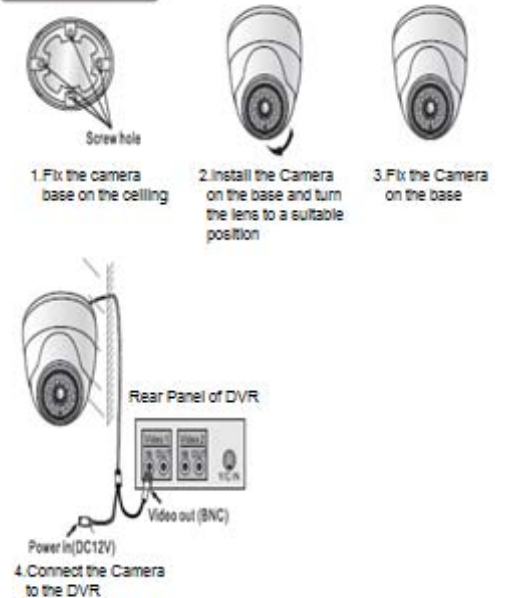
RISK OF ELECTRIC SHOCK
DO NOT OPEN!

TO REDUCE THE RISK OF ELECTRICAL SHOCK,
DO NOT OPEN COVERS (OR BACK).
NO USER SERVICEABLE PARTS INSIDE.
REFER SERVICING TO QUALIFIED
SERVICE PERSONNEL.

Individual Warnings:

- Do not attempt to service this video product by yourself as taking apart camera may expose you to dangerous voltage or other hazards.
- Please comply with all electrical safety standards during installation and operation.
- In order to prevent damage caused by fire or electric shock, please do not submerge camera in water or expose any open parts to liquid.
- Make sure to use the appropriate power supply and that the power is plugged into the camera correctly and securely. Do not switch on power until after camera connection is complete. This camera requires 12volt DC power.
- Do not expose the lens directly to the sun or to strong light as this may damage the pick-up device.
- There are some sophisticated parts inside this camera, therefore, always handle with care in order to avoid any internal damage to the camera.

Installation



Frequently Asked Questions:

No Image:

- Check the power cable to the power box or wall outlet. Make sure video and power connections are secure. Do not switch on power until camera connection is complete.
- If using a multiple output power box, make sure the power switch is in the "ON" position & all of the fuses are illuminated.
- If using a multiple output power box, make sure the POSITIVE (+) and NEGATIVE (-) wires are connected correctly.
- If using a spool of cable (not premade), make sure outer copper wire is not touching the center pin.
- Make sure the BNC video from connection from the camera is plugged into the video input on the DVR or display.