

NOTE: This version of PSS is compatible with LION OS X 10.7

Step 1

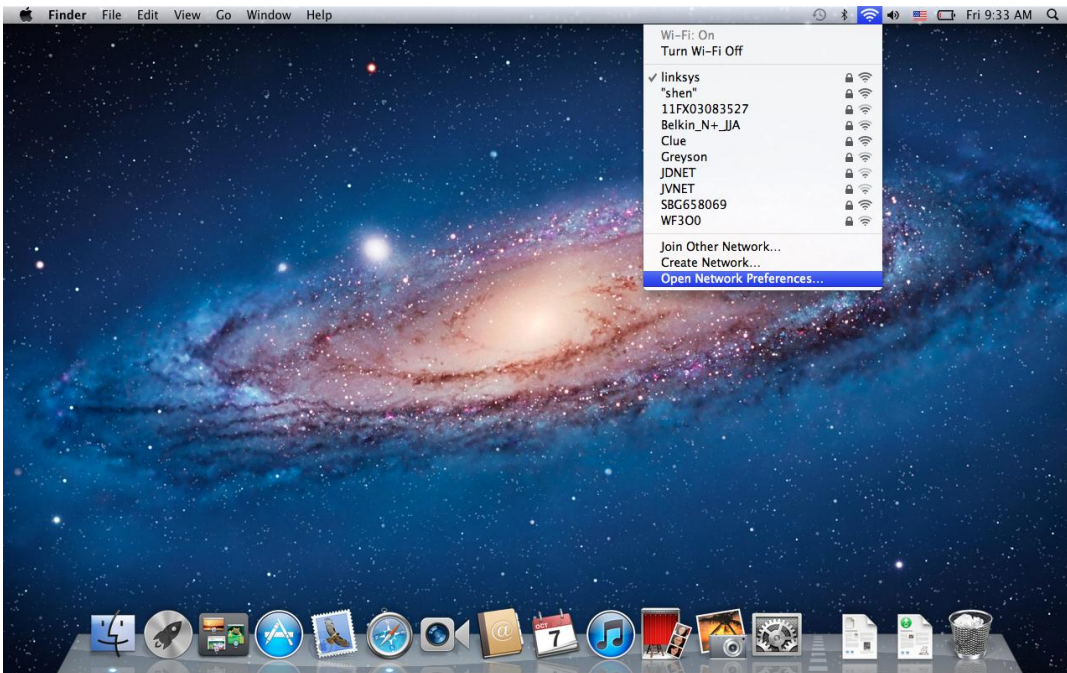
Connect your DVR into a Modem or Router using basic Ethernet / Cat-5 cable



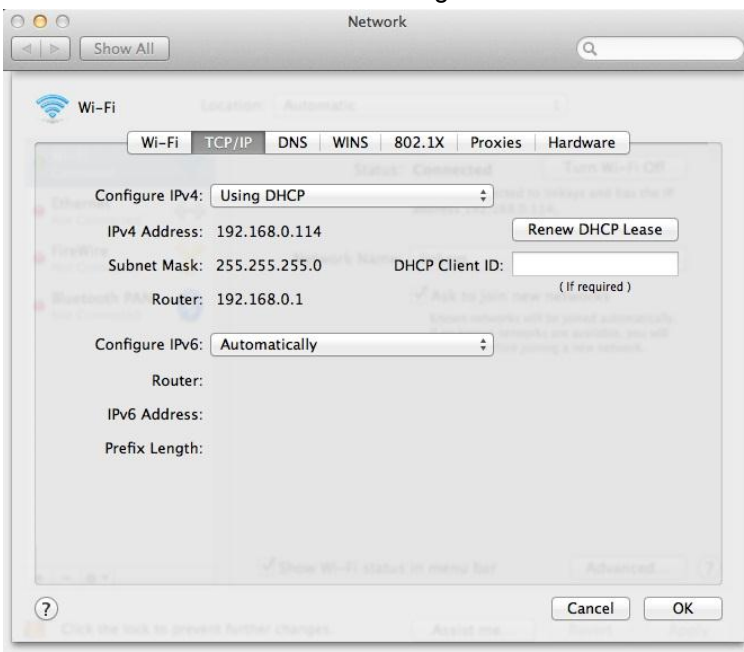
Step 2

Identify your Network IP Address

Click on the top left for “Network Connection” Click on “Open Network Preference (note: Please make sure you are connected to the same router as the DVR):



Click on “Advanced” on the bottom right and “TCP/IP” to be able to get your router IP address:



Look for Router address. **Please make a note of the Router Address as you will be needing it in order to access the router**

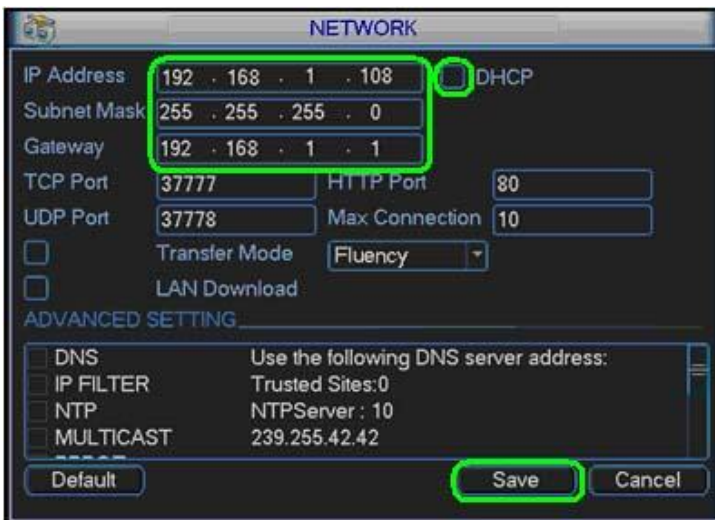
Hint: If your Router is 192.168.1.1 you can access the DVR without changing the current IP information default IP would be 192.168.1.108 skip step 3

Step 3

Assign a unique IP Address to the DVR

Go to your DVR and right click and go to **MAIN MENU**, click on **SETTING**, and then **NETWORK**.

Set it to DHCP



Save then reboot the DVR (Once back on go back to the network settings and see it populate) again the "gateway" is your router address

Step 4 Open Ports on Router for Remote View

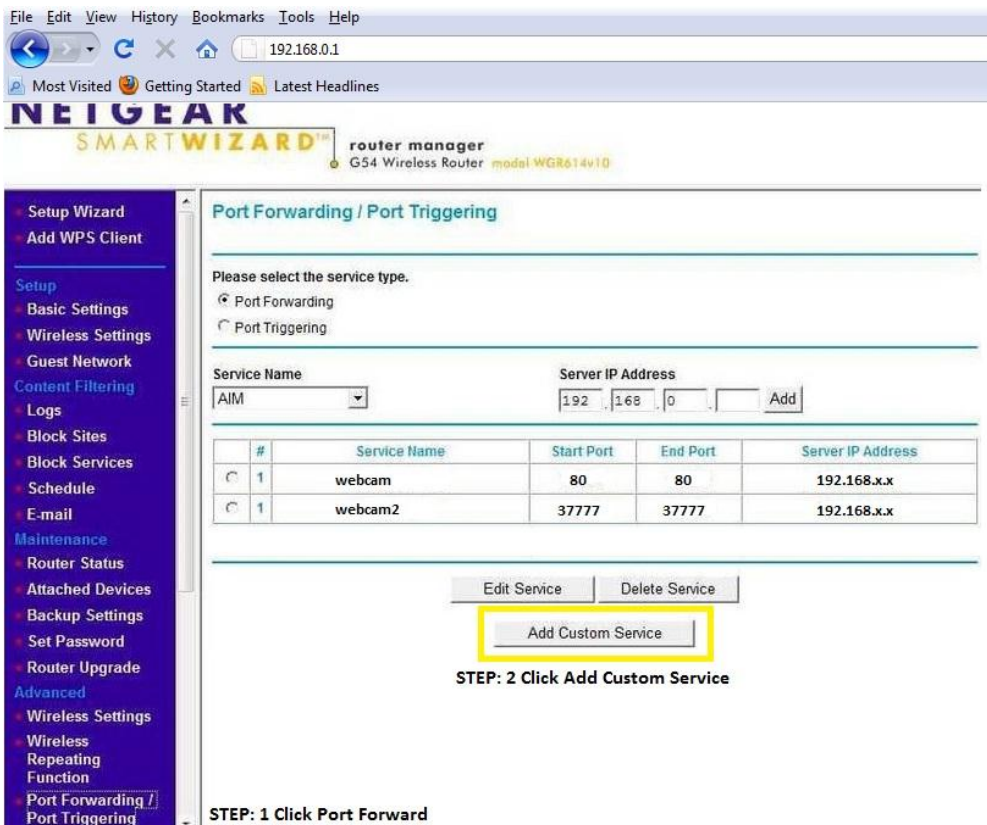
Log into your network Router by typing the Default Gateway IP into the Address Bar on your Safari browser (For Example: 192.168.1.1). You will be prompted to enter your Router's user name and password. **Please refer to your Router's manual to obtain this information.**

Default User name for NETGEAR is “admin” and password is “password”



Once you get onto your router’s main page the next step is to configure your network for remote access. In order to do this, you will need to configure your router's port forwarding settings.

The port forwarding process varies dependent upon router model. You can visit www.portforward.com for a list of guides by router model. You can also contact your router provider with additional questions regarding the port forwarding process. In this example we are using a NETGEAR Router.



Step 1: Click on port Forwarding

Step 2: Click on Add Custom Service you will need to do this process twice (Fig 1-1)

Ports to forward : 80 & 37777

NETGEAR

SMARTWIZARD

router manager

RangeMax™ NEXT Wireless Router model WNR8348

Ports - Custom Services

Service Name:

Service Type:

Starting Port: (1~65534)

Ending Port: (1~65534)

Server IP Address: . . .

Ports - Custom Services Help

To set up an application, game or service.

1. Type the service name in the **Service Name** box.
2. Type the beginning port number in the **Starting Port** box.
3. If the application uses only a single port, type the same port number in the **Ending Port** box.
4. If the application uses a range of ports, type the ending port number of the range in the **Ending Port** box.
5. Type the IP address of the computer in the **Server IP Address** box.
6. Click **Apply**.

Figure 1-1

You can check that the port is open by going to www.canyouseeme.org . Enter the port (80 & 3777) in the box and click check

CanYouSeeMe.org - Open Port Check Tool

This page will serve as a free utility for remotely verifying a port is open or closed. It will be useful for or ISP is blocking certain ports.

Your IP: **68.183.161.146**

What Port?

Common Ports

FTP	21
SSH	22
Telnet	23
SMTP	25
Web	80
Pop 3	110
IMAP	143

Other Applications

Remote Desktop	3389
PC Anywhere	5631

Success: I could **not** see your service on **68.183.161.146** on port (**80**)

Dynamic IP Redirator

After Port Forwarding is completed, go to no-ip.com to create a free domain name to access the dvr.

www.no-ip.com

On the Home page click on NO-IP Free

FROM \$15 Register Your Domain [input] .com Search

No-IP Free
Create a FREE hostname to point to your dynamic IP
See what over 10+ million users are talking about. Try us for FREE!
Learn More >

POP3 / IMAP Mail
Outsource your mail service administration
Packages including 100MB to 2GB of storage, webmail access, advanced spam and virus filtering!
As low as \$19.95 per year.
Learn More >

Feature Highlight
Configure your router to work with No-IP.com
Our DDNS is included in many hardware routers.
We'll help you get started.
Learn More >

Stay Connected
Upgrade your No-IP account to unlock many exciting features.
No-IP Backup DNS: Maximize uptime and add Anycast to your existing DNS infrastructure.
No-IP Monitoring: 24/7 server monitoring including automatic failover.
Mail Reflector: Run a mail server even if your ISP blocks port 25.

Creating an account is easy, simply fill out the form and be sure to include a valid email address for the confirmation email to be sent to. You must use a legitimate email address as it will request you to confirm it.

Create Your No-IP Account

If you already have an account then you can [sign in here](#).

About You:
First Name: [input]
Last Name: [input]
How did you hear about us?: [Select One]
Zip/Postal Code: [input]
Intended Use?: [Select from below]

Account Information:
Email: [input]
Password: [input]
Confirm Password: [input]

Account Access:
Security Question: [Select a Question]
Your Answer: [input]
Birthday: [Select a Month] [DD] [YYYY]

Account Verification:
30-196 atcover
Can't read this?
Get two new words
Hear a set of words
Powered by reCAPTCHA
Help
Type the two words above: [input]

Terms of Service:
Please review our Terms of Service (TOS) below. By creating an account you are agreeing to our TOS and Privacy Policy. The TOS states you may only have one (1) free account, and that creation of multiple free accounts will result in the termination of all of your accounts.
 I agree that I will only create one free No-IP account.
Terms of Service
1. ACCEPTANCE OF TERMS
No-IP.com is an Internet-based Web site that offers DNS Hosting, dynamic DNS, URL Redirection, email hosting, domain name registration, server monitoring, and software utilities (each a "Service" and collectively "Services"). Vitalwerks Internet Solutions, LLC, doing business as No-IP.com.
By clicking on "I Accept" below you are agreeing to the [Terms of Service](#) above and the [Privacy Policy](#).

I Accept, Create my Account

Once confirmed and logged in please click on Add a Host

The dashboard features a sidebar with navigation links like '24/7 Server Monitoring and Failover', 'Need Help?', and 'Get Connected'. The main content area includes a 'Usernames Now Available' section, a 'welcome to your No-IP!' message with a 'Last Login' timestamp, and a row of icons for 'Manage Domains', 'Add Domain', 'Refer Friend', 'Add a Host' (highlighted with a red box), and 'Manage Hosts'. Below this is a domain search bar with a 'FROM \$15' offer and a 'Search' button. At the bottom, there are links for 'Own a domain name?' and 'Your No-IP Alerts'.

Create a Hostname (Keep the name simple this will be your permanent address)

Note: Make sure you select DNS Host(A)

The 'Add a host' page is divided into several sections. The 'Hostname Information' section contains fields for 'Hostname' (cctvsecuritypros), 'Host Type' (DNS Host (A) selected), 'IP Address' (98.119.126.112), 'Assign to Group' (- No Group -), and 'Enable Wildcard'. A dropdown menu for domain selection is open, showing 'no-ip.info' as the selected option. Below this is the 'Accept Mail for your Domain' section with a checkbox. The 'Mail Options' section includes an 'MX Record' field and an 'MX Priority' dropdown set to '5'. At the bottom right, there are 'Revert' and 'Create Host' buttons.

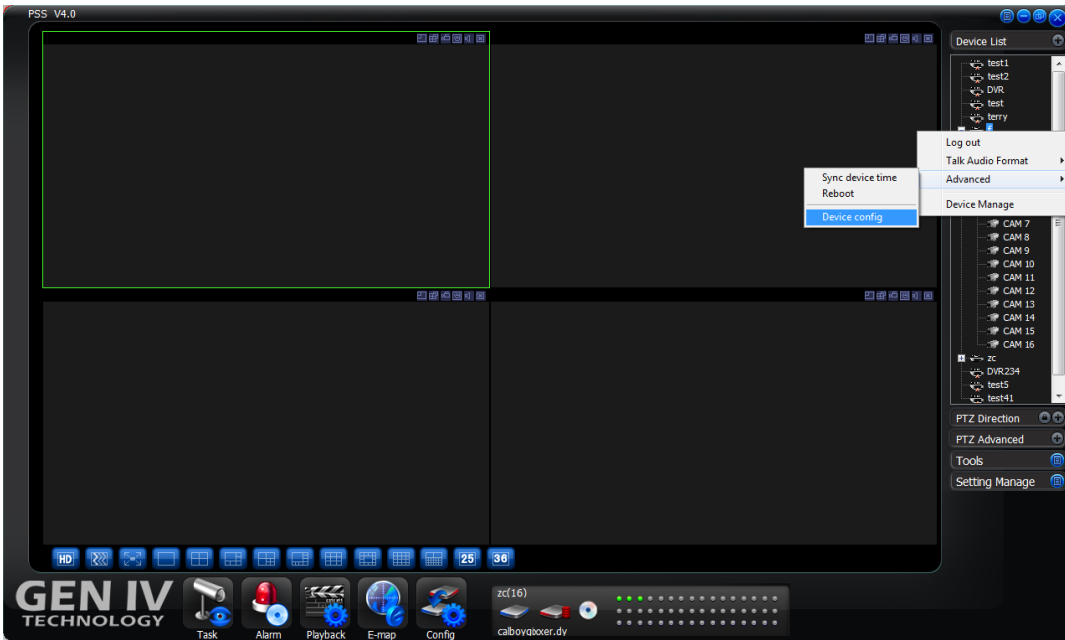
Then Click Create Host (please make a note of your email address/User name, password & hostname)

DDNS DVR Configuration

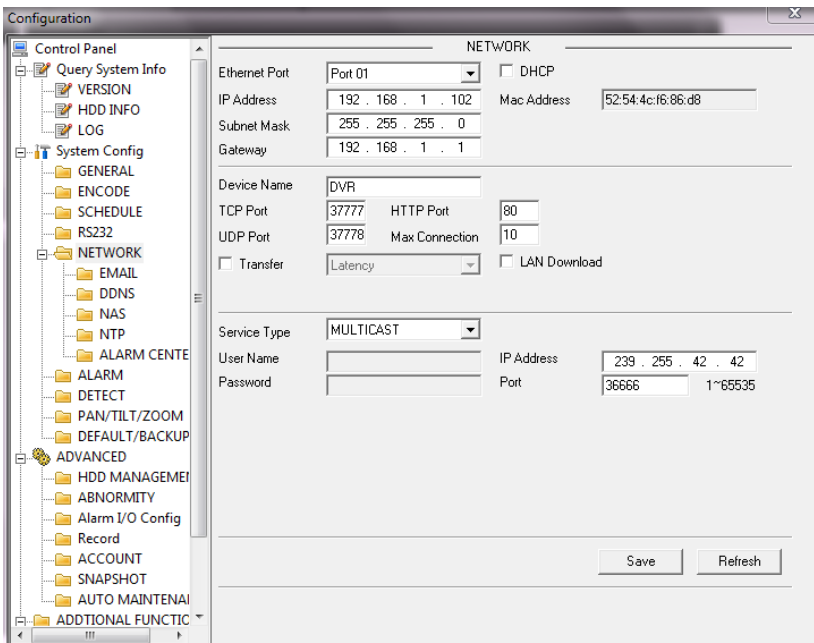
If this is the first time you have logged into your DVR Please click [HERE](#) first

Once you have opened PSS and logged into your DVR you will need to
 Go to Device List

Right click on your DVR click "Advanced" Then "Device Config"



Then Click on network and click on the file tab for DDNS.



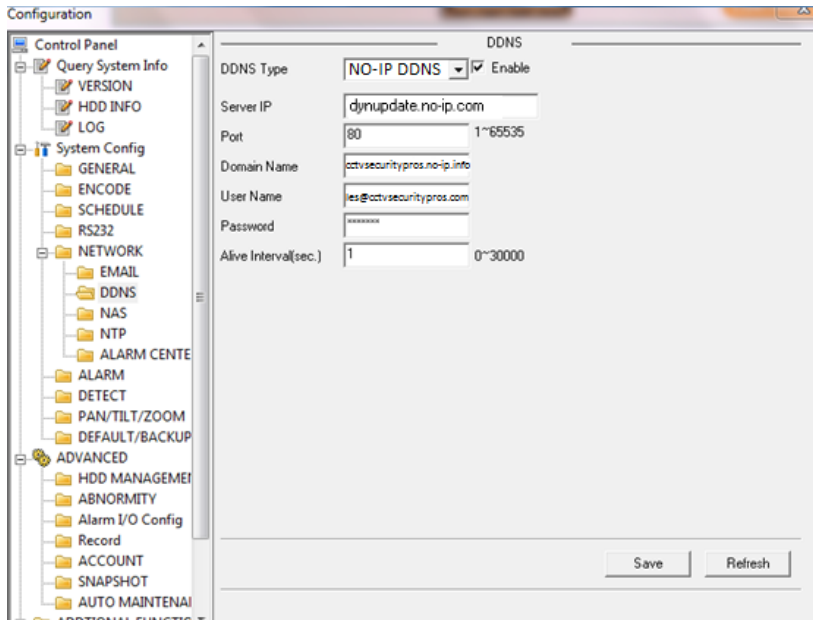
Select DDNS type “NO-IP DDNS” & Check enable

Server IP: “dynupdate.no-ip.com”

Domain name: the host name that you created in NO-IP.com (ex: cctvsecuritypro.no-ip.info)

User name: the email or user name that you created in NO-IP.com (ex: sales@cctvsecuritypros.com)

Password: the password that you created in NO-IP.com



That completes this section of the network configuration, the host name that you created ex. cctvsecuritypros.dyndns.org is best to test outside your network.

If you ever have trouble with any step of this remote viewing setup guide please don't hesitate to contact technical support at 1-888-653-2288.