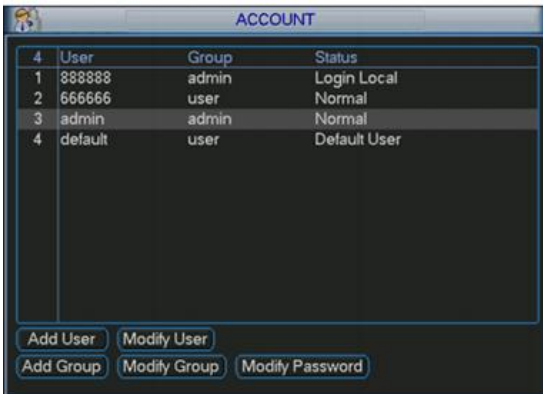
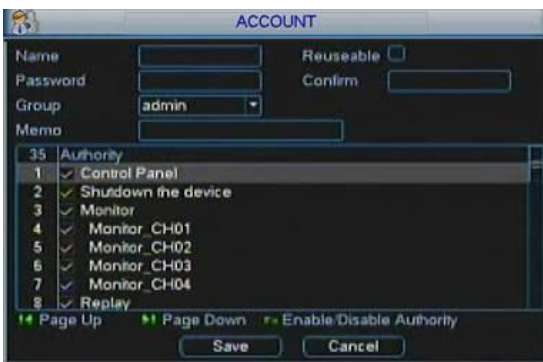


**Step 1:** Right click on the screen, click on “Main Menu” then “Advanced” then “Accounts”

**Step 2:** If you would like to modify the current accounts click the account and then click “Modify User”  
 If you would like to create a new user click on “ Add User”



**Step 3:** Each user can have different authority such as, only allowing certain cameras to be seen or shutting off certain options for security purposes. Create the name and password and hit “Save”



**Password Modification Screen**

