

### Step 1

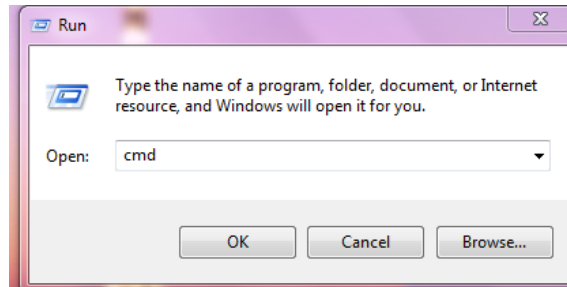
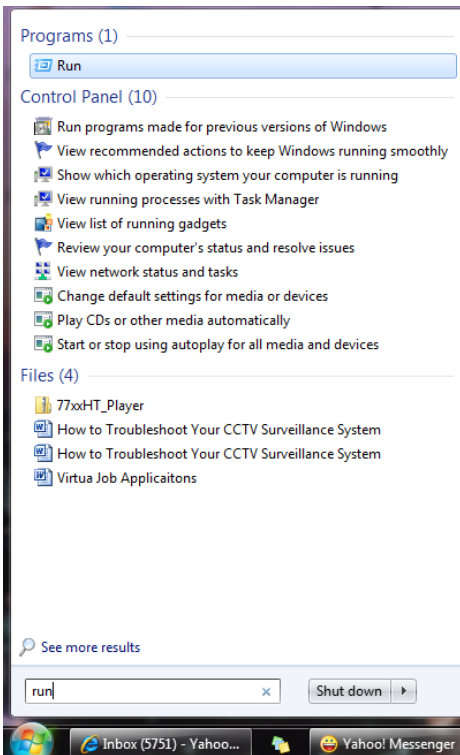
Connect your DVR into a Modem or Router using basic Ethernet / Cat-5 cable



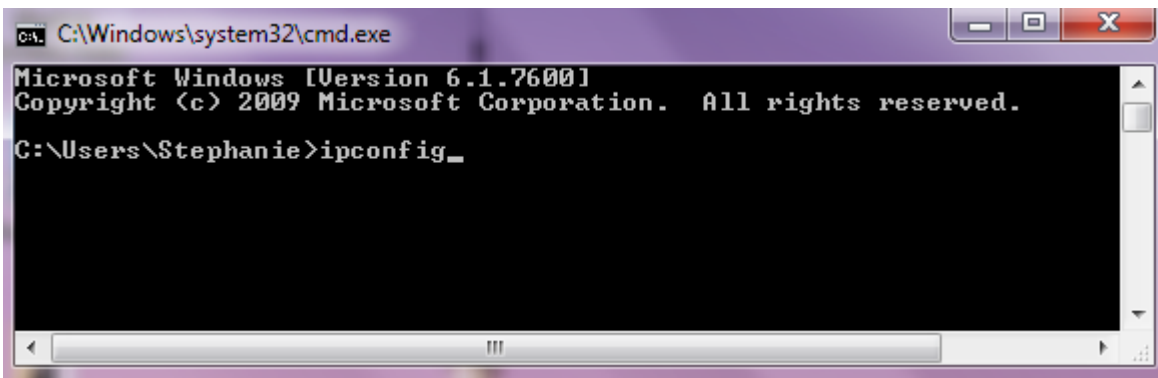
### Step 2

Identify your Network IP Address

In order to identify your network IP addresses go to a computer that is connected to the same network as the DVR. On Windows, click the **start** button, select **Run** and type "CMD" as shown below, and click OK. See example below:



The command prompt below will appear. Type "ipconfig" and click Enter.



```
C:\Windows\system32\cmd.exe

Ethernet adapter Local Area Connection:

    Media State . . . . . : Media disconnected
    Connection-specific DNS Suffix . . . . . :

Wireless LAN adapter Wireless Network Connection:

    Connection-specific DNS Suffix . . . . . : hsd1.nj.comcast.net.
    Link-local IPv6 Address . . . . . : fe80::84ef:604e:fa:107b%11
    IPv4 Address. . . . . : 192.168.1.101
    Subnet Mask . . . . . : 255.255.255.0
    Default Gateway . . . . . : 192.168.1.1
```

Look for Default Gateway address which would be your Router address. **Please make a note of the Default Gateway as you will be needing it in order to access the router**

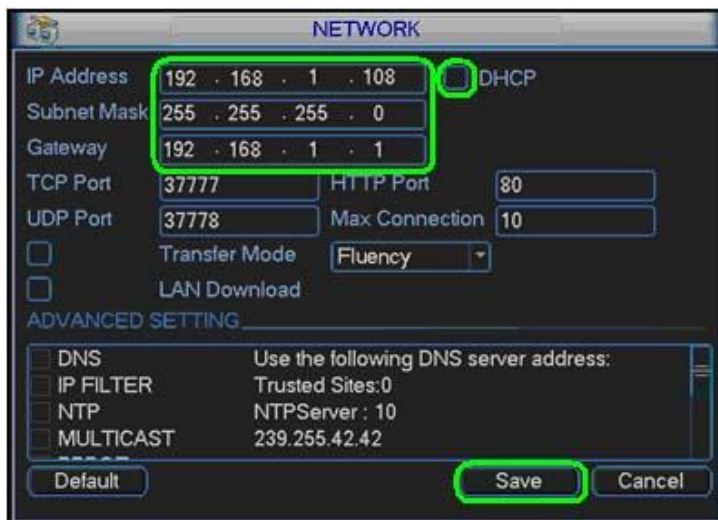
**Hint: If your gateway is 192.168.1.1 you can access the DVR without changing the current IP information default IP would be 192.168.1.108 skip step 3**

### Step 3

Assign a unique IP Address to the DVR

Go to your DVR and right click and go to MAIN MENU, click on SETTING, and then NETWORK.

Set it to DHCP



Save then reboot the DVR (Once back on go back to the network settings and see it populate) again the “gateway” is your router address

### Step 4 Open Ports on Router for Remote View

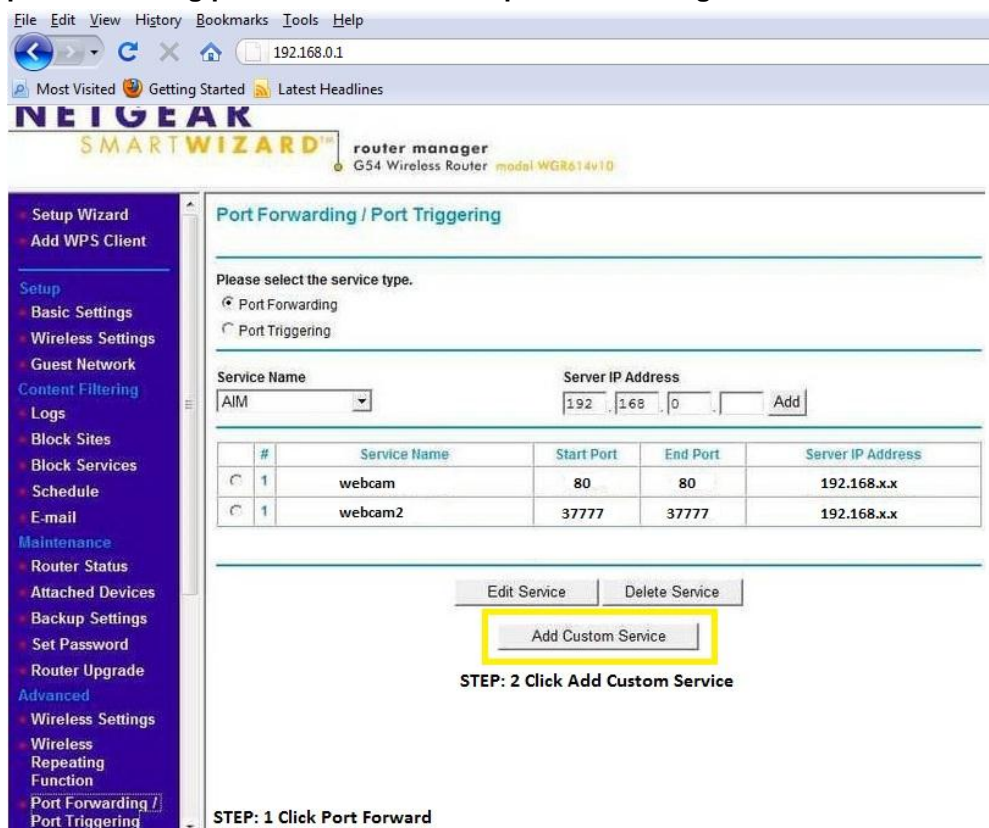
Log into your network Router by typing the Default Gateway IP into the Address Bar on your Internet browser (For Example: 192.168.1.1). You will be prompted to enter your Router’s user name and password. **Please refer to your Router’s manual to obtain this information.**

Default User name for NETGEAR is "admin" and password is "password"



Once you get onto your router's main page the next step is to configure your network for remote access. In order to do this, you will need to configure your router's port forwarding settings.

**The port forwarding process varies dependent upon router model. You can visit [www.portforward.com](http://www.portforward.com) for a list of guides by router model. You can also contact your router provider with additional questions regarding the port forwarding process. In this example we are using a NETGEAR Router.**



Step 1: Click on port Forwarding

Step 2: Click on Add Custom Service you will need to do this process twice (Fig 1-1)

**Ports to forward : 80 & 37777**

**NETGEAR**

SMARTWIZARD

router manager

RangeMax™ NEXT Wireless Router model WNR8348

**Ports - Custom Services**

Service Name:

Service Type:

Starting Port:  (1~65534)

Ending Port:  (1~65534)

Server IP Address:  .  .  .

**Ports - Custom Services Help**

To set up an application, game or service.

1. Type the service name in the **Service Name** box.
2. Type the beginning port number in the **Starting Port** box.
3. If the application uses only a single port, type the same port number in the **Ending Port** box.
4. If the application uses a range of ports, type the ending port number of the range in the **Ending Port** box.
5. Type the IP address of the computer in the **Server IP Address** box.
6. Click **Apply**.

Figure 1-1

You can check that the port is open by going to [www.canyouseeme.org](http://www.canyouseeme.org) . Enter the port (80 & 3777) in the box and click check

## CanYouSeeMe.org - Open Port Check Tool

This page will serve as a free utility for remotely verifying a port is open or closed. It will be useful for or ISP is blocking certain ports.

Your IP: **68.183.161.146**

What Port?

**Common Ports**

FTP	21
SSH	22
Telnet	23
SMTP	25
Web	80
Pop 3	110
IMAP	143
<b>Other Applications</b>	
Remote Desktop	3389
PC Anywhere	5631

**Success:** I could **not** see your service on **68.183.161.146** on port **(80)**

## Dynamic IP Redirator

After Port Forwarding is completed, go to no-ip.com to create a free domain name to access the dvr.

[www.no-ip.com](http://www.no-ip.com)

On the Home page click on NO-IP Free

FROM \$15 Register Your Domain [input] .com [Search]

**No-IP Free**  
Create a FREE hostname to point to your dynamic IP  
See what over 10+ million users are talking about. Try us for FREE!  
Learn More >

**POP3 / IMAP Mail**  
Outsource your mail service administration  
Packages including 100MB to 2GB of storage, webmail access, advanced spam and virus filtering!  
As low as \$19.95 per year.  
Learn More >

**Feature Highlight**  
Configure your router to work with No-IP.com  
Our DDNS is included in many hardware routers.  
We'll help you get started.  
Learn More >

**Stay Connected**  
Upgrade your No-IP account to unlock many exciting features.  
No-IP Backup DNS: Maximize uptime and add Anycast to your existing DNS infrastructure.  
No-IP Monitoring: 24/7 server monitoring including automatic failover.  
Mail Reflector: Run a mail server even if your ISP blocks port 25.

Creating an account is easy, simply fill out the form and be sure to include a valid email address for the confirmation email to be sent to. You must use a legitimate email address as it will request you to confirm it.

### Create Your No-IP Account

If you already have an account then you can [sign in here](#).

**About You:**  
First Name: [input]  
Last Name: [input]  
How did you hear about us?: [Select One]  
Zip/Postal Code: [input]  
Intended Use?: [Select from below]

**Account Information:**  
Email: [input]  
Password: [input]  
Confirm Password: [input]

**Account Access:**  
Security Question: [Select a Question]  
Your Answer: [input]  
Birthday: [Select a Month] [DD] [YYYY]

**Account Verification:**  
30-196 atcover  
Type the two words above: [input]  
Can't read this?  
Get two new words  
Hear a set of words  
Powered by reCAPTCHA  
Help

**Terms of Service:**  
Please review our Terms of Service (TOS) below. By creating an account you are agreeing to our TOS and Privacy Policy. The TOS states you may only have one (1) free account, and that creation of multiple free accounts will result in the termination of all of your accounts.  
 I agree that I will only create one free No-IP account.  
Terms of Service  
1. ACCEPTANCE OF TERMS  
No-IP.com is an Internet-based Web site that offers DNS Hosting, dynamic DNS, URL Redirection, email hosting, domain name registration, server monitoring, and software utilities (each a "Service" and collectively "Services"). Vitalwerks Internet Solutions, LLC, doing business as No-IP.com.  
By clicking on "I Accept" below you are agreeing to the [Terms of Service](#) above and the [Privacy Policy](#).

Once confirmed and logged in please click on Add a Host

The dashboard features a sidebar with navigation links: 'Click here for more info', '24/7 Server Monitoring and Failover', 'Need Help?' (Support Center, Basic Troubleshooting Guide, Support Ticket, Contact Us), and 'Get Connected' (RSS, Facebook, Twitter, LinkedIn). The main content area includes a 'Usernames Now Available' section, a 'welcome to your No-IP!' message with the last login time, and a row of icons for 'Manage Domains', 'Add Domain', 'Refer Friend', 'Add a Host' (highlighted with a red box), and 'Manage Hosts'. Below this is a domain search bar with a 'FROM \$15' price tag and a 'Search' button. At the bottom, there are links for 'Own a domain name?' and 'Your No-IP Alerts'.

Create a Hostname (Keep the name simple this will be your permanent address)

**Note: Make sure you select DNS Host(A)**

The 'Add a host' page is under the 'Hosts/Redirects' tab. It contains the following sections:
 

- Own a domain name?**: A green box with the text 'Use your own domain name with our DNS system. Add your domain name now or read more for pricing and features.'
- Hostname Information**: A form with fields for:
  - Hostname: cctvsecuritypros
  - Host Type:  DNS Host (A),  DNS Host (Round Robin),  Port 80 Redirect,  Web Redirect
  - IP Address: 98.119.126.112
  - Assign to Group: - No Group -
  - Enable Wildcard: Wildcards are a Plus / Enhanced feature.
- Accept Mail for your Domain**: A green box with the text 'Let No-IP do the dirty work. Setup POP or forwarding for your name.'
- Mail Options**: A section for 'MX Record' with a field for the external mail exchanger's name and a dropdown for 'MX Priority' set to 5.

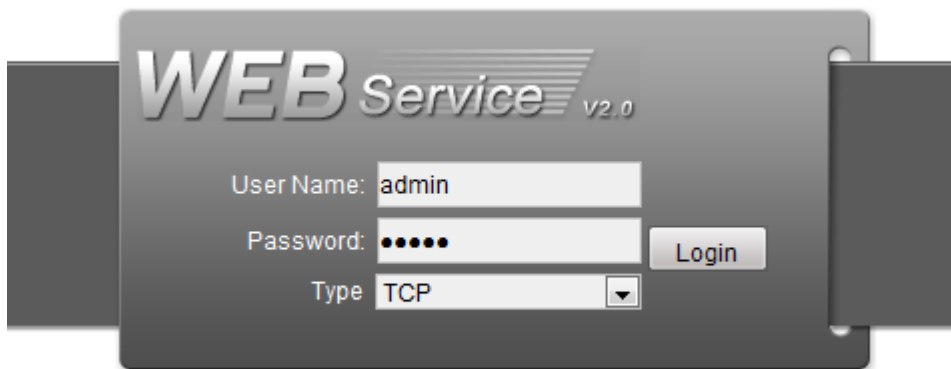
 At the bottom right of the form are 'Revert' and 'Create Host' buttons. The footer contains navigation links: Home, API, Contact Us, Sitemap, Terms of Service, Privacy Policy, and Blog.

Then Click Create Host (please make a note of your email address/User name, password & hostname)

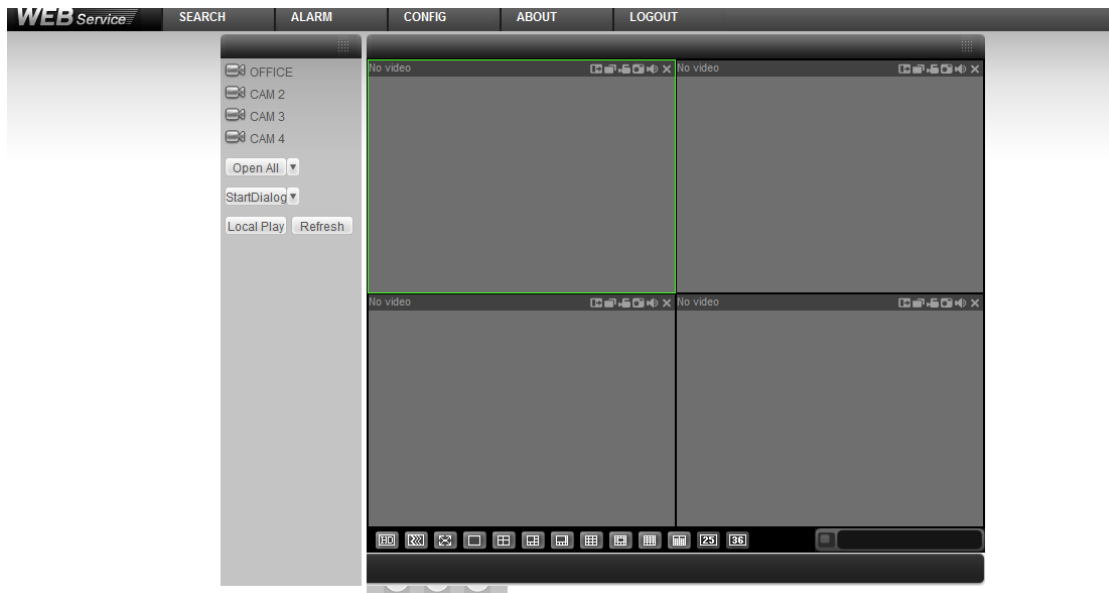
## DDNS DVR Configuration

If this is the first time you have logged into your DVR Please click [HERE](#) first

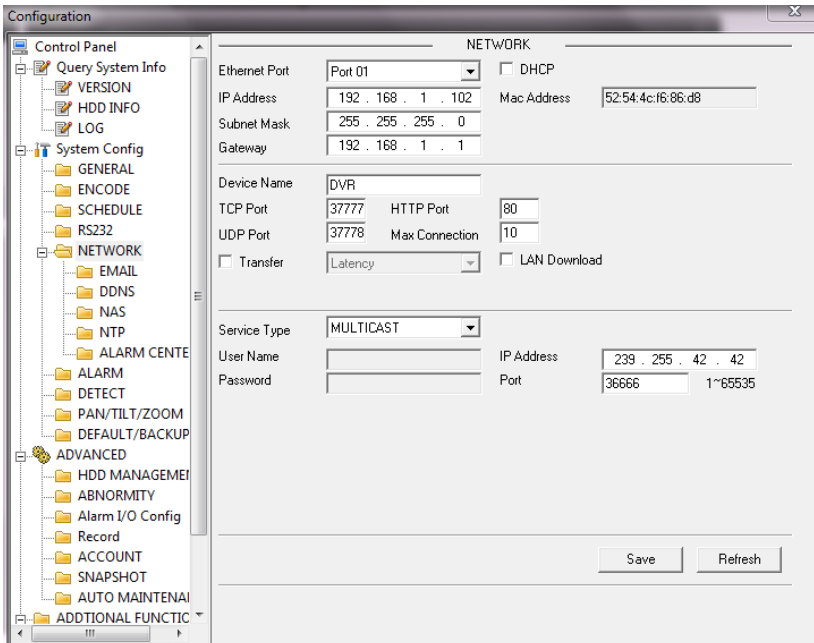
Once you hit enter it should load you to this WEB SERVICE page and the default user name and password are the same as your DVR default passwords. Click Login.



Once logged in you will have access to your cameras locally, click on CONFIG.



Then Click on network and click on the file tab for DDNS.



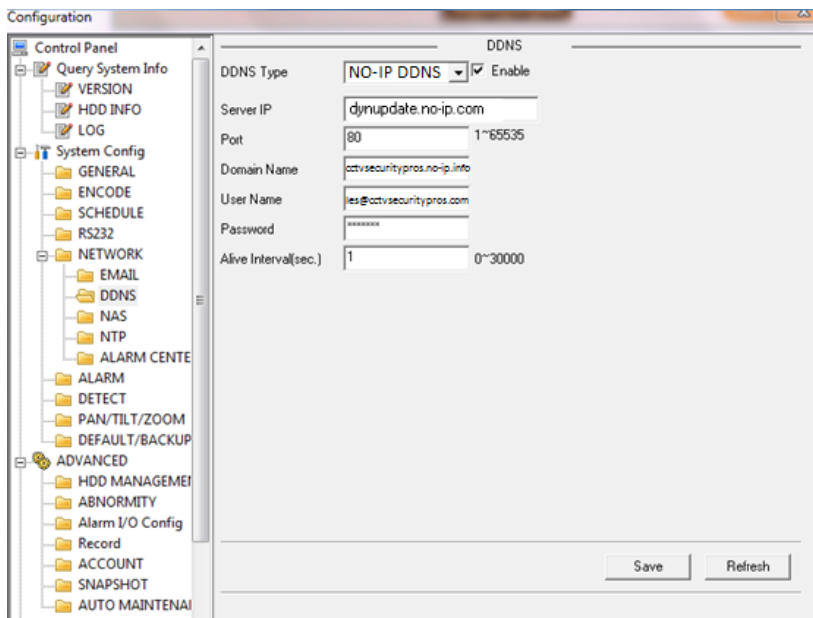
**Select DDNS type** “NO-IP DDNS” & Check enable

**Server IP:** “dynupdate.no-ip.com”

**Domain name:** the host name that you created in NO-IP.com (ex: cctvsecuritypros.no-ip.info)

**User name:** the email or user name that you created in NO-IP.com (ex: sales@cctvsecuritypros.com)

**Password:** the password that you created in NO-IP.com



That completes this section of the network configuration, the host name that you created ex. cctvsecuritypros.dyndns.org is best to test outside your network.

If you ever have trouble with any step of this remote viewing setup guide please don't hesitate to contact technical support at 1-888-653-2288.