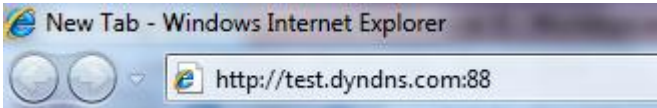


Step 1

Start by launching an Internet Explorer browser window.

Step 2

Next, in the address bar of Internet Explorer input either the static IP or domain name assigned to your DVR.



Step 3

If this is your first time loading Web Service, you will need to install Active X. Once this has been installed, restart your web browser and input your IP again



If you do not see a prompt like the one above asking you to install ActiveX, or it does not allow you to install please follow the following instructions.

- 1.) **Enable** all **Active X** options within Internet Explorer. Go to **Tools -> Internet Options -> Security Tab**
- 2.) Click the **Internet icon** and then click the **Custom Level** button near the bottom of the screen.
- 3.) Scroll down to the section titled "**Active X Controls and Plugins**"
- 4.) For **every option** within that **section**, set to **Enable**.
- 5.) Click **OK** to close the security settings window, and Click **OK** again to close the options window.
- 6.) Please make sure to resecure your IE once the login has been loaded by going back to **Tools -> Internet Options -> Security Tab** and **click Default level**. (This is only done once)

Step 4

You should now be able to login to Web Service by typing in your IP address into the address bar of internet explorer.



Step 5

Once logged in, click on "Open All" on the left side of the Web Service screen to view your cameras.



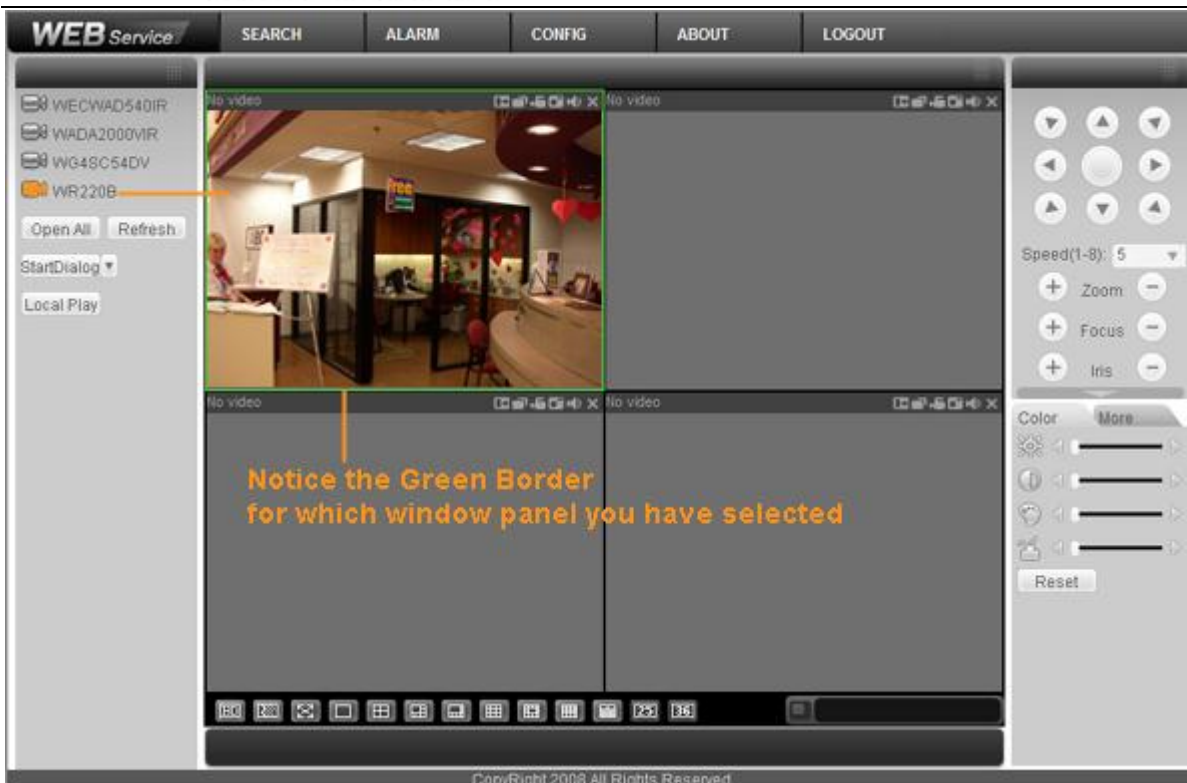
Step 6

Once logged in you should see the interface shown below. Take note to the various options throughout the interface.



Step 7

To simply connect on to individual channels, select the window panel you want to stream to by left clicking it (a green border should be present). Now on the left hand side, click the channel (CAM) you want to stream. You can use the preview mode towards the bottom right to bring in multiple channels in to the same window panel.



Step 8

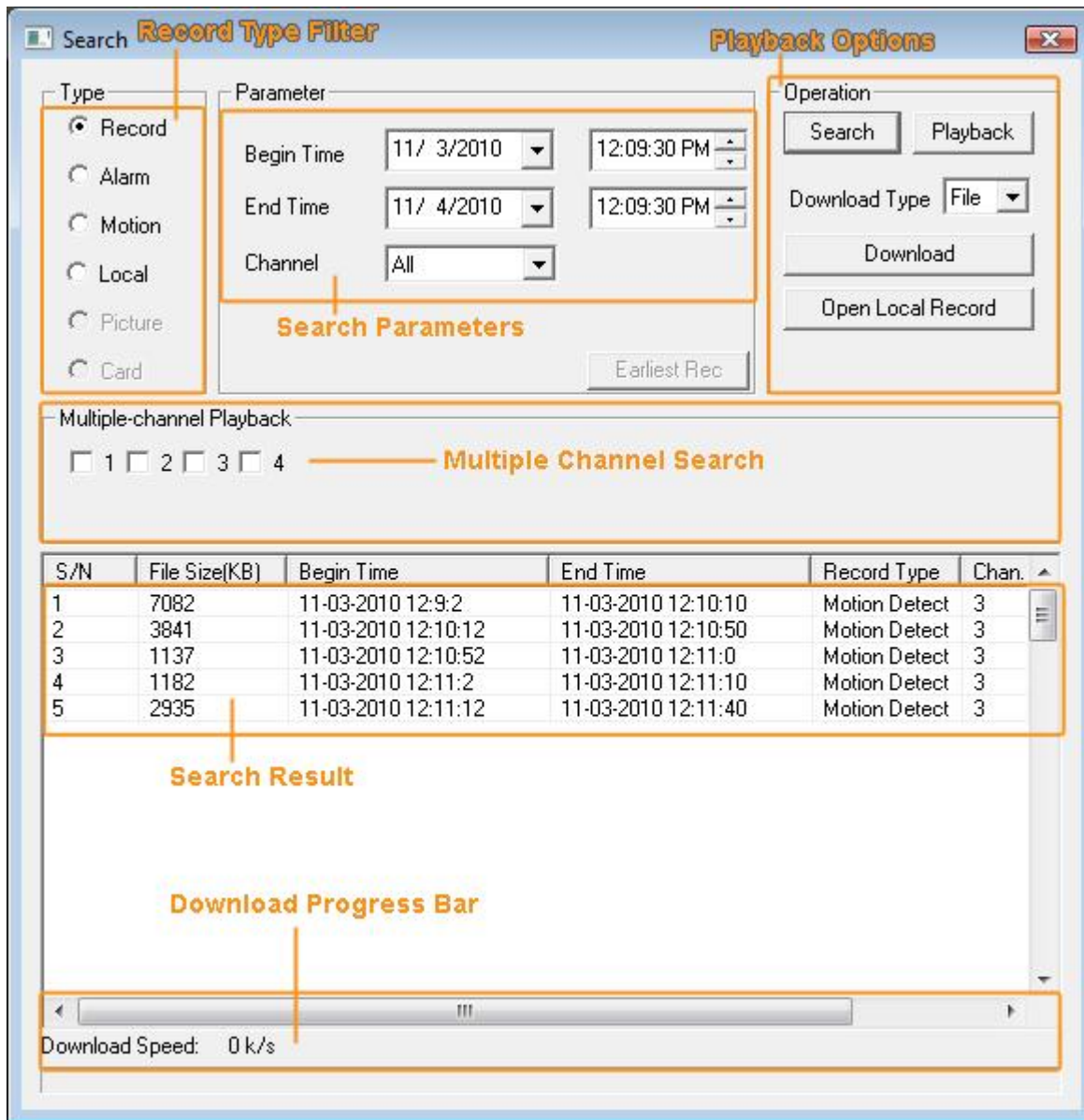
Quick window panel features have been added for ease of control for streaming live video or playing back. In each window panel you will see a set of icons in the top right hand corner. Described from left to right: Digital zooming, Quick view change, Local streaming recording, Snap shot, Enable/Disable audio, Exit current stream. These options are detailed more in the unit's manual.



Step 9

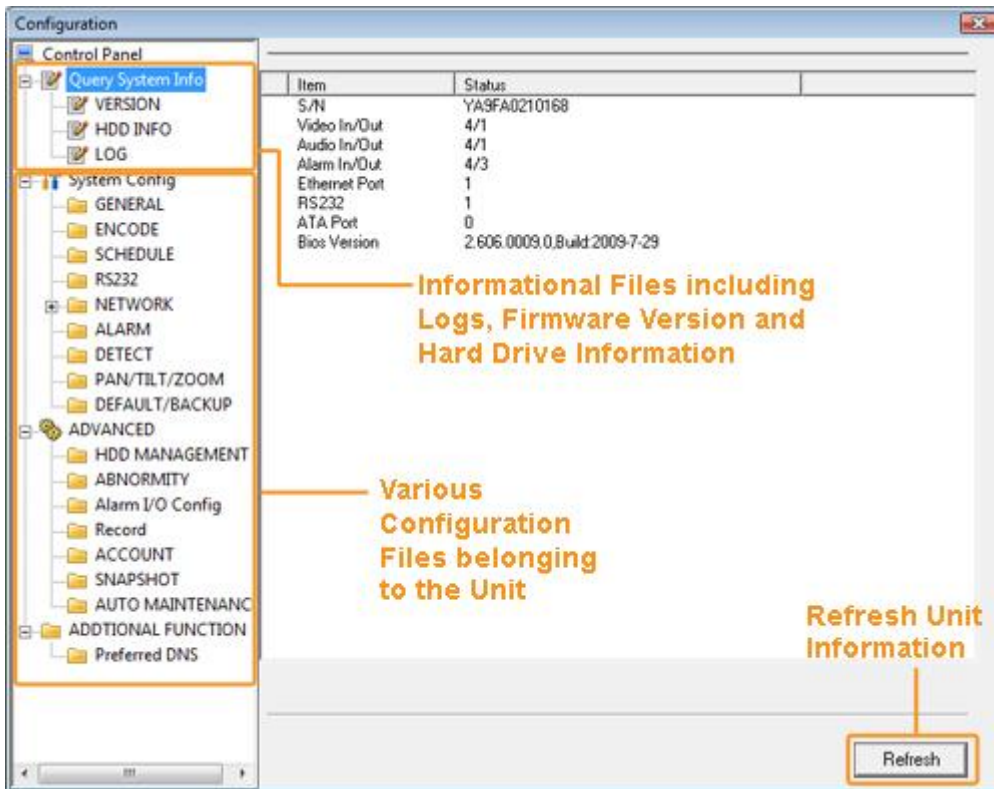
Since you now know how to simply stream your cameras, let's look at the several other options towards the top of the interface's page. Starting with the playback feature of the interface, click the "playback" button. Playing back is made even easier through our redeveloped interface. Start out by choosing a recording type you want to filter out, configure the times in which you are searching for, and finally choose a single channel to start the search with. You may search up to 4 channels at a time with the option below your parameter section. Proceed with clicking the search button in the upper right panel of the screen to bring in the results. Double click on any given result that is displayed to start playing it or highlight it and press download to have it directly downloaded

on to your local hard drive.



Step 10

To gain access to the DVR's configuration files, click on the "setup" button. This menu will give you the ability to change/view various options in the DVR such as your schedule, channel quality, the ability to view log files, create user accounts and much more. The sub categories match with the DVR's interface so it's an easier transition when wanting to configure through the software level. The setup menu is described in more detail in the unit's manual.



Step 11

Next on the list is the event menu. Click on the “event” button at the top of the interface to bring it up. This option allows you to trigger certain events when caused by something such as motion, hard drive errors, vide masking and more. Once you check mark the events you want the system to alert you for, check mark on the operation you want it to perform when said event triggers. You can also allow the event to trigger an audible sound by setting the options under “alarm sound”. A constant log should be kept for the remainder of the time you have these events activated.

Event Selection

Event Type

- Video Loss
- Encoder Alarm
- Motion Detect
- External Alarm
- Disk Full
- Disk Error
- Video Mask

Event Options

Operation

- Listen Alarm
- Video Pop-up
- Prompt

Alarm Sound

- Sound Pop-up

Sound Path >>

Time	Device ID	Event Type	Alarm Port/Channel
17:33:16	8.10.62.213	Motion Detect	16
17:33:16	8.10.62.213	Motion Detect	5
17:33:16	8.10.62.213	Motion Detect	16
17:33:15	8.10.62.213	Motion Detect	16
17:33:14	8.10.62.213	Motion Detect	16
17:33:13	8.10.62.213	Motion Detect	16
17:33:12	8.10.62.213	Motion Detect	16
17:33:10	8.10.62.213	Motion Detect	5
17:33:10	8.10.62.213	Motion Detect	16
17:33:10	8.10.62.213	Motion Detect	5
17:33:10	8.10.62.213	Motion Detect	5
17:33:10	8.10.62.213	Motion Detect	16
17:33:10	8.10.62.213	Motion Detect	5
17:33:9	8.10.62.213	Motion Detect	5
17:33:8	8.10.62.213	Motion Detect	16
17:33:8	8.10.62.213	Motion Detect	5
17:33:8	8.10.62.213	Motion Detect	5
17:33:8	8.10.62.213	Motion Detect	16
17:33:8	8.10.62.213	Motion Detect	5
17:33:6	8.10.62.213	Motion Detect	16
17:33:6	8.10.62.213	Motion Detect	5
17:33:5	8.10.62.213	Motion Detect	16

Step 12

The last two options that are left are “info” and “logout”. Click on the “info” button to bring up the current version of the web client you are working on. Click on the “logout” button to log you off the current user.

Note: Please refer to your unit’s manual for more detailed instructions about anything that was went over in this walkthrough.