

STEP 1 – LAN (Local Area Network) Setup

Note: If you only plan on viewing DVR on your own network, you will be able to do so after completing Part I.

1: Connect your DVR into a Modem or Router using basic **Ethernet / Cat-5 cable**



2: Log in to your DVR. If this is the first time logging in, you can use the default usernames and passwords. There are three which are listed in the box below.

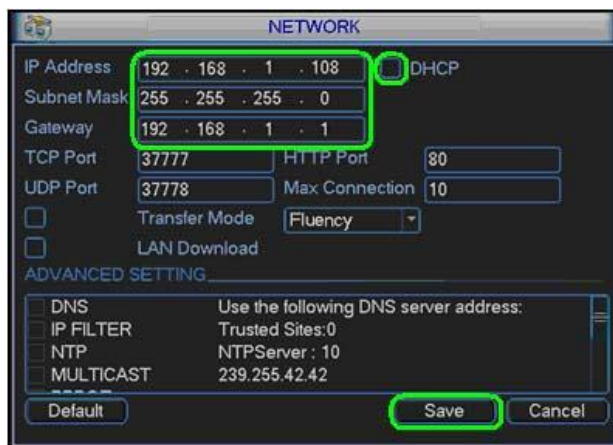


Username: admin, Password: admin
 Username: 888888, Password: 888888
 Username: 666666, Password: 666666

3: Once in the **Main Menu**, go to **Settings** and then go to **Network**

4: In the **Network settings**, next to where it shows the IP address you will see a small box that says **DHCP**. Click on this box so that it is highlighted **“white”**. It may change your IP address or even change all of the digits to all 0's. This is OK. Select **“Save”** and then simply reboot the DVR. You can hold in the power button on the front right hand side for about 3 to 5 seconds until it powers down. Press the power button again to reboot.

Note: By Selecting the DHCP box and rebooting the DVR, we are now asking the DVR to communicate with the router and assign a unique IP address to the DVR.



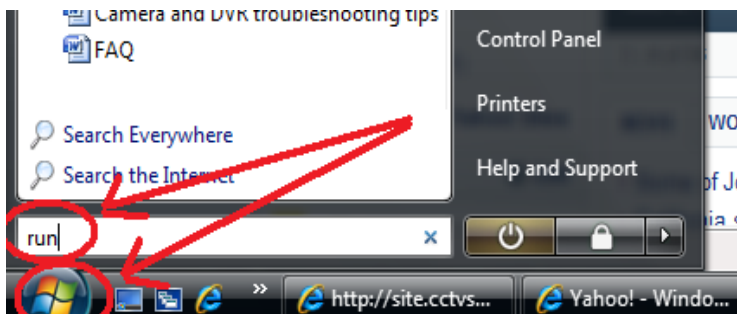
5: Once powered back on, go back into the **Network settings**. Here you will see an **IP address**. This is your DVR's IP address. Please write this address down. The **Default Gateway address** is your router's IP address. Write this down as well. You will need this

information shortly. Now, make sure you **uncheck** the **DHCP** box so it is no longer highlighted and select **“Save”**.

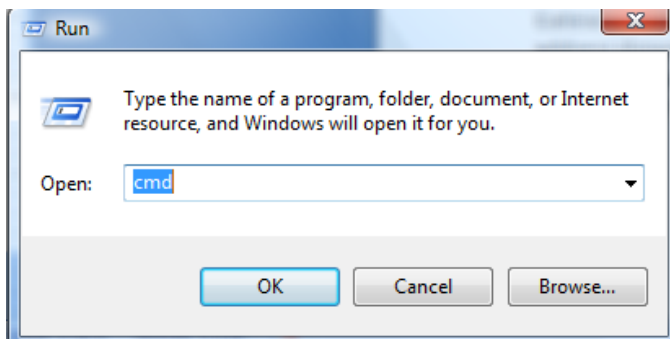
Warning: If after rebooting the DVR still has all 0's as the IP address, you are not communicating with your router properly. Please check all connections, check your routers port and/or try using a different cable. After you have done a thorough diagnostic exam of your cables & connections then try rebooting the DVR again. If you are still experiencing all 0's, then try rebooting your router and/or referring to your routers user manual for further connectivity troubleshooting.

6: At this point we will perform a quick test just to be sure that you do not have more than one router and that the computer you are using is on the same network as your DVR.

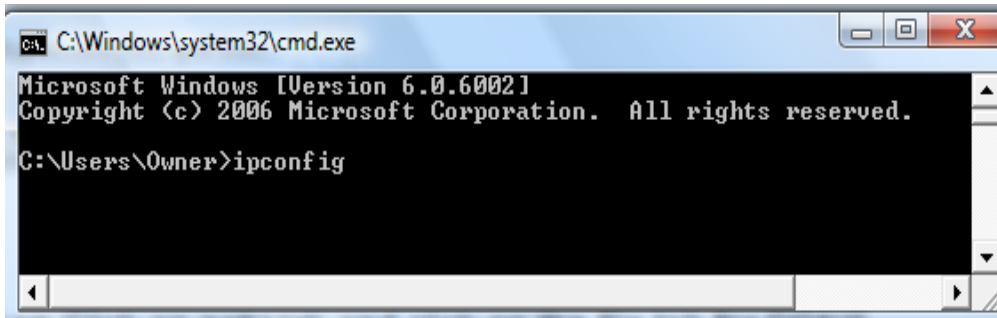
First, go to the **start menu** on your computer and either type in **“run”** in the search box or if there is an option you can just select **“run”** from the start menu.



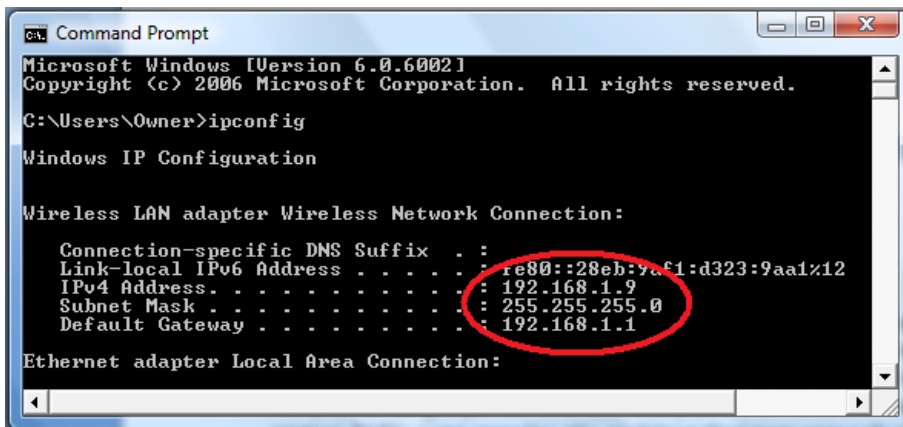
Once you have opened the **“run”** window type **“cmd”** to bring up the command menu.



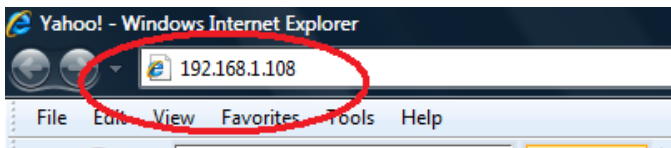
At the cursor in the command menu, simply type **“ipconfig”**.



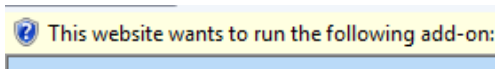
This will show you your **Gateway address** (Router's IP address). Make sure it matches the **Default Gateway address** that you wrote down from the DVR's network settings. There will also be an IP address shown. You are not concerned with this IP address. It is the IP address of the actual computer that you are using to perform this test. Each and every device connected to the network (i.e. computers, printers, DVR's, game consoles, etc.) has its own unique IP address.



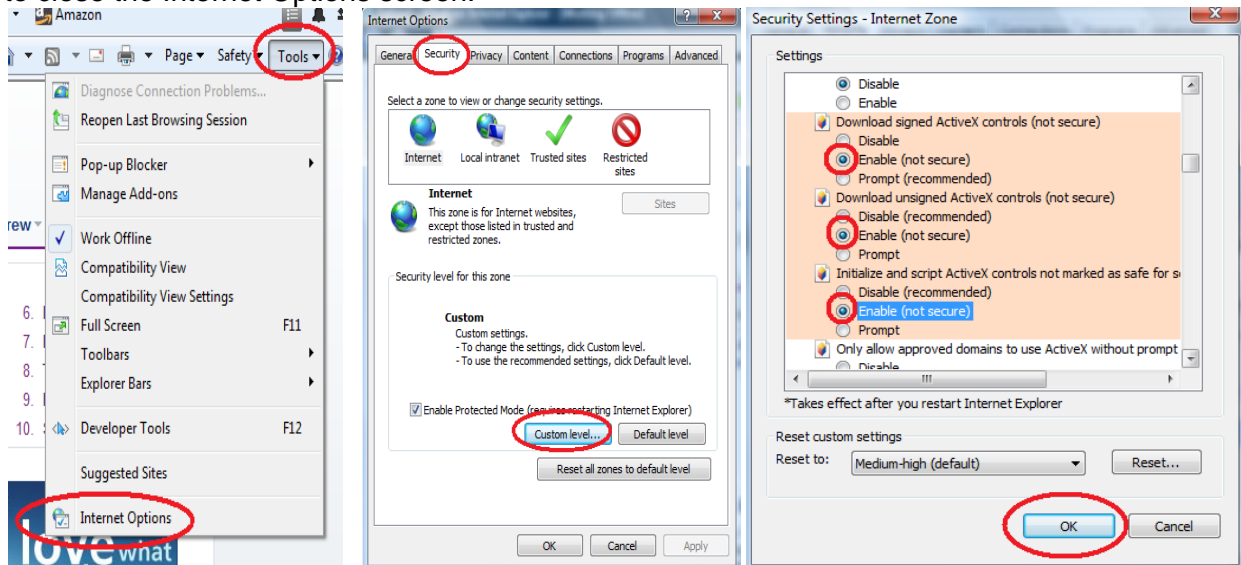
7: You now have access to your DVR from any computer on the same network only. In order to view your DVR simply type in your **DVR's IP address** into your Internet Explorer browser. This is the address you wrote down earlier in Step 4 (example: 192.168.1.108). Please be aware that your DVR's assigned IP address may very well be different from below example.



Note: When visiting your DVR from any computer for the first time, you will automatically be prompted to install the **Active X plug-in**. In the next step we will show you how to temporarily adjust your security settings in order to enable this safe download.



8: In order to install Active X, go to **TOOLS> INTERNET OPTIONS> SECURITY> CUSTOM LEVEL**...and then scroll down under the Active X options and check the enable button for the options that says **“Download signed Active X”**, **“Download unsigned Active X”** and **“Initialize and script active x controls not marked as safe”**. Click **OK**, then **Yes** to the security warning (we are going to reset your security settings in a moment) and then **OK** again to close the Internet Options screen.



After the Internet options menu is closed you will see another pop up banner going all the way across the top of the screen. Scroll over or right click on this pop up and select the **install Active X** or **Download plug in**. Once the Active X plug in is installed you will see the log in screen for your DVR.

Note: Before you log into your DVR, go back to the pop up banner and right click on it. Select the first option **“Fix Settings”**. If the pop up banner is no longer displayed you can also go into **TOOLS> INTERNET OPTIONS> SECURITY** and select **RESTORE DEFAULT SECURITY SETTINGS**.

9: To log into your DVR through **Web Service**, you will be using the same username and password that you used for the DVR above which was **“admin”** & **“admin”**.



10: You should now see the screen for your cameras. To open all of the cameras in order, click in the first box so that it is outlined in green. Then in the menu on the left hand side, select **“Open All”**. You can configure the cameras in a different order by clicking the box so that it is highlighted in green and then click on the camera icon for the camera that you want to open there.

Tip: At the very bottom of this screen you will see a number of different icons for various screen configurations. Select the one that you prefer. Also, to bring one camera to a full screen view, just double click on the box with the video from that camera.



Congratulations!!! You are now able to view your cameras from any computer on your network.

If you only wish to view your cameras from a computer that is on the same network then you are finished. To view your cameras again simply type in the DVR's IP address into the Internet Explorer browser. You will only have to go through the installation steps for the Active X plug in if you are trying to access your DVR from a different computer on the network for the very first time.

In order to view your cameras remotely from outside of your network, please go on to complete Steps 2 & 3.