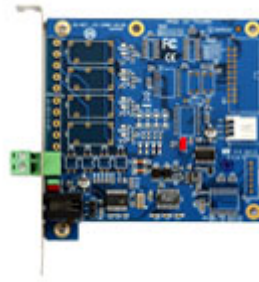


GV-NET Card V3.1



The GV-NET Card V3.1 is a RS-485 / RS-232 interface converter that can be installed inside a PC. It also supports connection via USB port.

Specifications		
Interface	RJ-11 to DB9 (RS-232)	
	RJ-11 to USB	
	3-pin internal USB to internal USB	
	RS-485+ / RS-485-	
Communication	RS-485 1,200~115,200 bps; USB	
Environmental Conditions	0~50°C / 32~122°F, 5%~95% (non-condensing)	
OS Supported	32-bit	Windows XP / Windows Vista / Windows 7 / Windows Server 2008
	64-bit	Windows 7 / Windows Server 2008 (Only for PC's COM port connection)
Dimensions (W x H)	97 x 90 (mm) / 3.82 x 3.54 (in)	
Installation Guide	GV-NET Card V3.1	