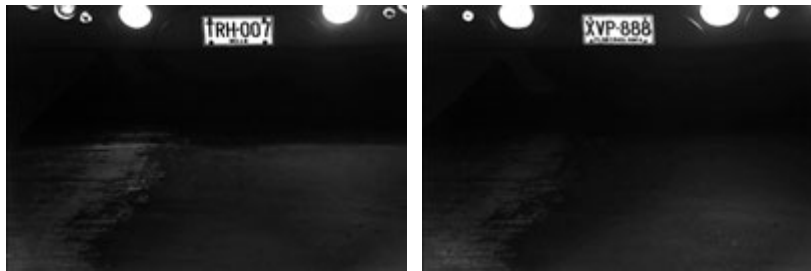


## GV-LPR CAM 20A ANPR Camera



### INTRODUCTION

The GV-LPR CAM gives a 570TVL high-contrast license plate recognition video to the GV-LPR software that identifies license plates. The camera features 24 high-efficient LEDs for an illumination range of 30 meters / 98.43 feet. The camera also features a weather-sealed IP66-compliant housing with the heater and blower inside.



### KEY FEATURES

- Built-in powerful IR LED illuminator
- Built-in always-on blower
- Weatherproof (IP66 standard)
- Sun-shield

### Specifications

Sensor	1/3" B/W Exview CCD
Heater	≤ 5°C (ON), > 5°C (OFF) ; 20W
Resolution	570 TVL
Construction	Robust aluminum with weatherproof sun-shield
Protection classification	IP 66
Temperature	Operation: -30 °C ~ 50 °C / -22 °F ~ 122 °F Storage: -30°C ~ 70°C / -22 °F ~ 158 °F
LED Quantity	24 High-efficient LEDs
IR Distance	30 m / 98.43 ft 20 ± 5m / 65.62 ± 16.4 ft (optimal)
Illumination View Angle	30°
Illuminator Life	25,000 hrs
Power Supply	DC 12V
Power Consumption	30W (normal), 50W (heater on)
Dimensions (L x W x H)	425.01 x 155 x 156.75 mm / 16.73 x 6.10 x 6.17 in (with sun shield)
Weight	5 kg / 11.02 lb (with sun shield)