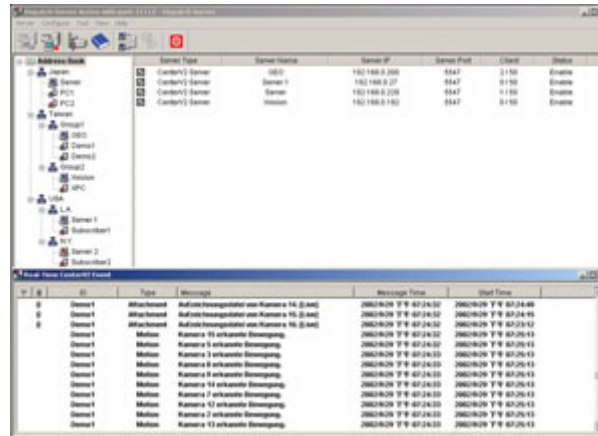


GV-Dispatch Server



INTRODUCTION

The GV-Dispatch Server is a computer with Dispatch software that works with GV-Center V2 servers and the GV-Systems. The GV-Dispatch Server connects 25,000 GV-Systems to 50 GV-Center V2 Pro servers and distributes the workload between online and offline GV-Center V2 servers. It utilizes load-balancing technique that distributes requests from event-triggered GV-Systems evenly across a GV-Center V2 network. If one GV-Center V2 server starts to get swamped, the GV-Dispatch Server forwards requests to another GV-Center V2 server with more capacity. When one GV-Center V2 server fails to work, another can take over in the processing activity.

REASONS OF RECOMMENDATION

- ▶ Important for large GV-Center V2 server farm: It is difficult to predict the number of requests from multiple GV-Systems to a server
- ▶ Suitable for businesses or franchise stores: usually accompanied with a large cluster of networked GV-Systems in use and an enormous amount of surveillance service required
- ▶ Streamlines networking processes: no single server will be overwhelmed from GV-Systems to GV-Center V2 servers

GV-DISPATCH SERVER FEATURES

- ▶ Create, edit groups of GV-Center V2 servers and subscribers
- ▶ Up to 50 GV-Center V2 servers and 25,000 GV-System subscribers manageable
- ▶ Network Load Balancing: Distribute GV-System requests to GV-Center V2 servers by Group or by least connections available
- ▶ Direct GV-Center V2 servers to GV-Dispatch server available
- ▶ View real-time GV-Center V2 events and attached videos
- ▶ Check, control GV-Center V2 online/offline status
- ▶ View subscriber's address book and single-view Camera/Audio Control Panel
- ▶ Control PTZ, play videos, and two-way audio via Camera/Audio Control Panel
- ▶ Automatic connection recovery

SEARCH/PLAYBACK

- ▶ Keep tracks of GV-Center V2 event logs and Dispatch logs
- ▶ Recycle feature: Delete old files for non-stop recording
- ▶ Search GV-Center V2 events by types, GV-Center V2 ID, event date, and time
- ▶ Remote playback events with video attachments
- ▶ Flag bookmarks for the highlight of important events

LOG BROWSER

- ▶ Display GV-Dispatch Servers status for system service, GV-Center V2 login/logout history, connection, control, and Dispatch status
- ▶ Backup event lists and video files
- ▶ Log Filter as a search engine

CAMERA/AUDIO CONTROL PANEL



GV-DISPATCH SERVER MODULE QUICK INFO

Features	GV-Dispatch Server
Maximum # of Channels	400,000
Maximum # of Subscribers	25,000
Maximum # of Center V2	50
Maximum # of Sensors / Alarms	1,800,000 / 3,600,000
Real-Time Audio Monitoring	Yes
Remote PTZ Control	Yes
Remote I/O Control	No
Auto Recording	No
Event List Viewer	Yes
Event List Filter	Yes
Dual Monitor Support	No
Network Load Support	Yes
Automatic Connection Recovery	Yes

MINIMUM SYSTEM REQUIREMENTS

Standard Version		
OS	32bit 64bit	Windows XP, Windows Vista, Windows 7, Windows Server 2008 Windows 7, Windows Server 2008
CPU		Pentium 4, 3.0 GHz with HT
Memory		2 x 512 MB Dual Channels
Hard Disk		1 GB
VGA		NVIDIA GeForce 8600GT or ATI Radeon X1650
Direct X		9.0c
Note: To run a GV-Dispatch Server, the GV-Dispatch Server USB key pro is required in order to connect to the System required above.		
Advanced Version (used for more than 100 DVR subscribers)		
OS	32bit 64bit	Windows XP, Windows Vista, Windows 7, Windows Server 2008 Windows 7, Windows Server 2008
CPU		Core2 Duo E6600, 2.4 GHz
Memory		2 x 1 GB Dual Channels
Hard Disk		1 GB
VGA		NVIDIA GeForce 8600GT or ATI Radeon X1650
Direct X		9.0c